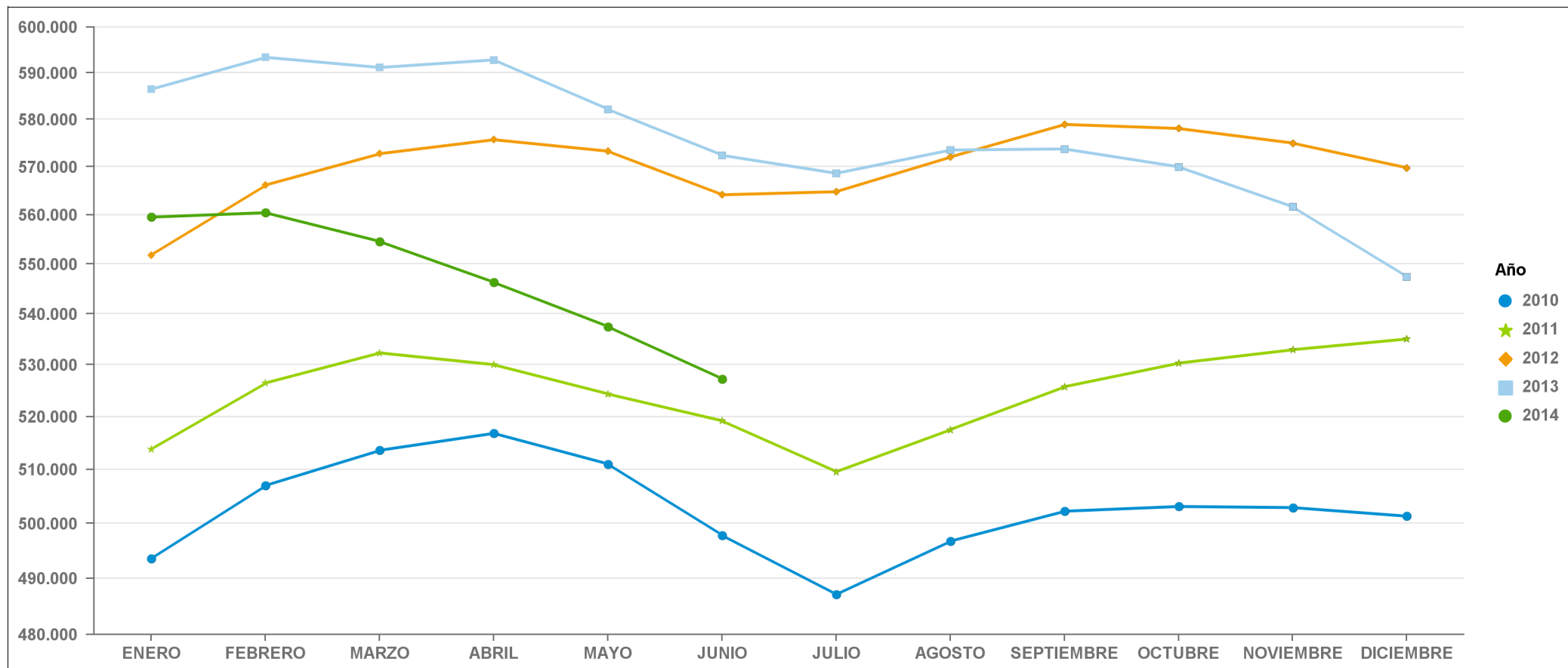


ESTADÍSTICA COMUNIDAD DE VALENCIANA

EVOLUCIÓN MENSUAL DEL PARO REGISTRADO

PERÍODO 2010 - 2014

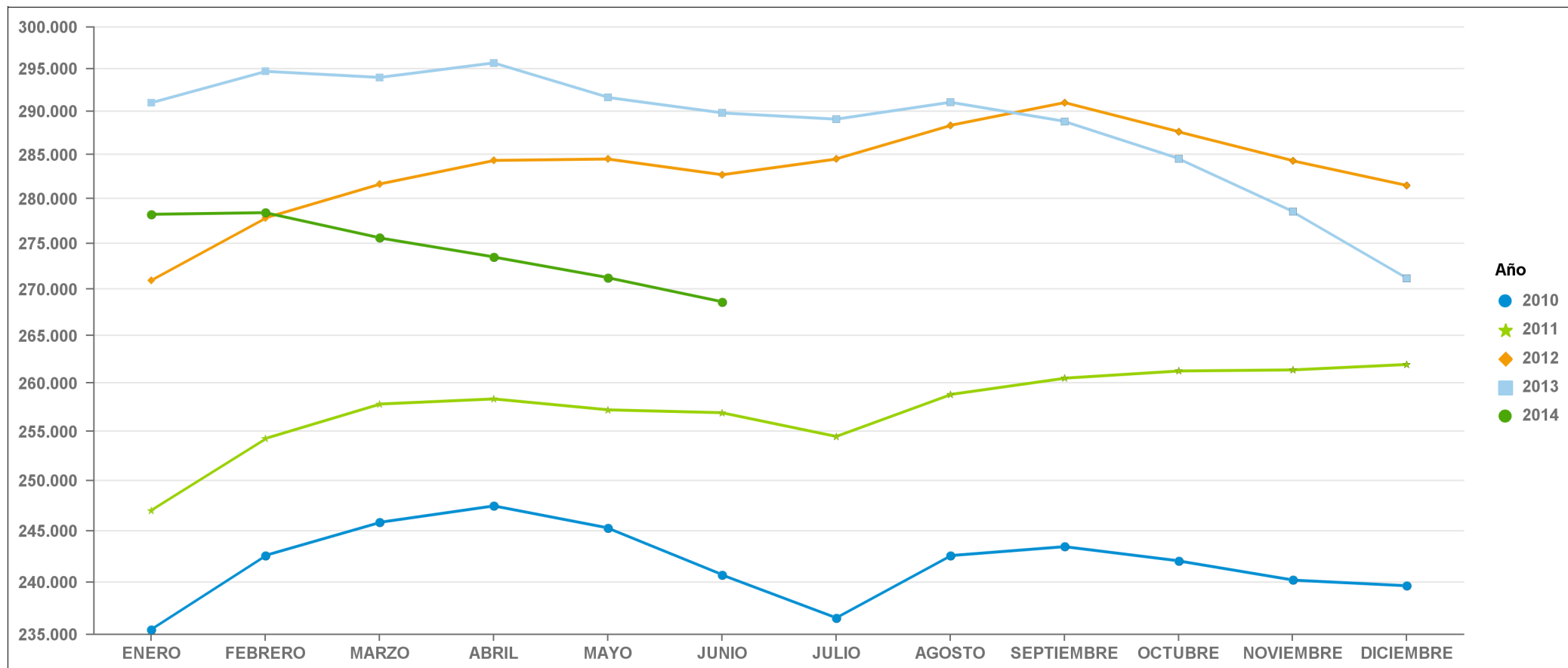


Año	ENERO	FEBRERO	MARZO	ABRIL	MAYO	JUNIO	JULIO	AGOSTO	SEPTIEMBRE	OCTUBRE	NOVIEMBRE	DICIEMBRE
2010	493.567	506.989	513.588	516.821	511.014	497.808	487.098	496.732	502.237	503.109	502.905	501.315
2011	513.800	526.440	532.315	530.006	524.335	519.180	509.558	517.510	525.732	530.307	532.930	535.036
2012	551.793	566.131	572.706	575.667	573.234	564.130	564.768	572.009	578.907	578.040	574.939	569.735
2013	586.420	593.357	591.125	592.797	582.126	572.373	568.584	573.486	573.715	569.947	561.618	547.360
2014	559.523	560.438	554.536	546.277	537.458	527.240	0	0	0	0	0	0

ESTADÍSTICA PROVINCIA DE VALENCIA

EVOLUCIÓN MENSUAL DEL PARO REGISTRADO

PERÍODO 2010 - 2014

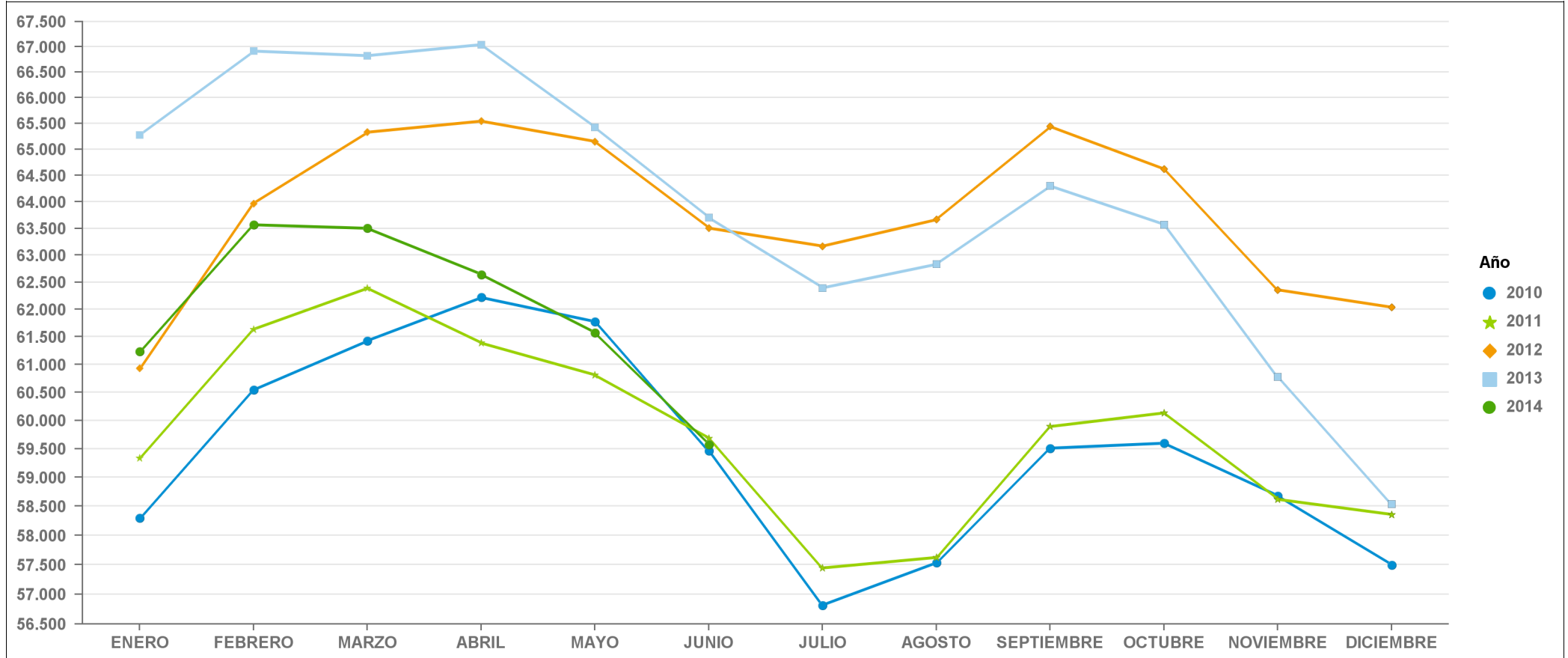


2010	235.468	242.585	245.835	247.475	245.280	240.705	236.559	242.572	243.451	242.059	240.196	239.649
2011	247.018	254.258	257.810	258.343	257.210	256.913	254.460	258.798	260.501	261.258	261.373	261.945
2012	270.934	277.832	281.642	284.331	284.493	282.692	284.495	288.363	291.030	287.624	284.292	281.470
2013	290.992	294.700	293.973	295.706	291.623	289.813	289.083	291.065	288.827	284.533	278.528	271.142
2014	278.241	278.425	275.616	273.506	271.243	268.619	0	0	0	0	0	0

ESTADÍSTICA PROVINCIA DE CASTELLÓN

EVOLUCIÓN MENSUAL DEL PARO REGISTRADO

PERÍODO 2010 - 2014

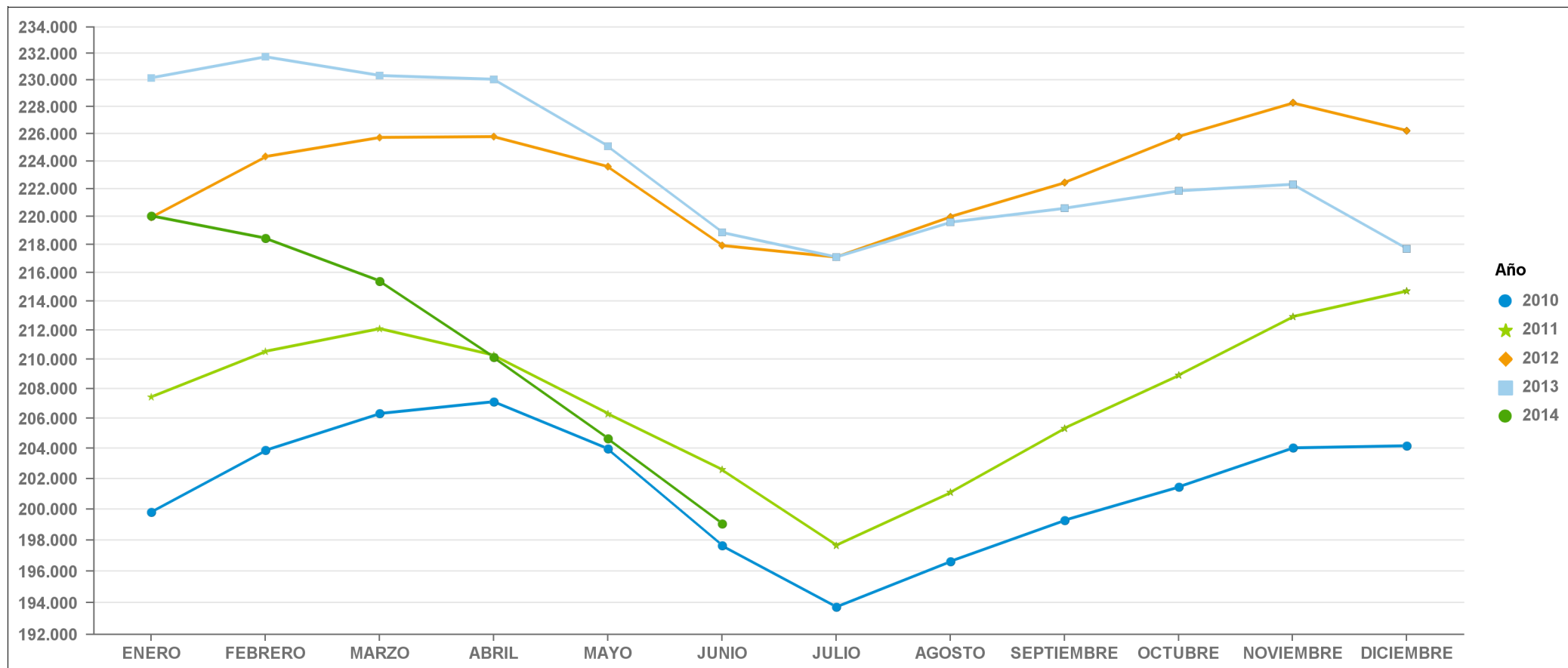


2010	58.294	60.541	61.428	62.219	61.775	59.466	56.816	57.535	59.511	59.599	58.678	57.495
2011	59.342	61.636	62.391	61.388	60.809	59.686	57.443	57.623	59.892	60.135	58.619	58.357
2012	60.930	63.971	65.329	65.544	65.150	63.507	63.168	63.667	65.440	64.620	62.360	62.038
2013	65.273	66.913	66.822	67.042	65.421	63.703	62.394	62.833	64.302	63.572	60.774	58.538
2014	61.234	63.568	63.502	62.643	61.573	59.573	0	0	0	0	0	0

ESTADÍSTICA PROVINCIA DE ALICANTE

EVOLUCIÓN MENSUAL DEL PARO REGISTRADO

PERÍODO 2010 - 2014

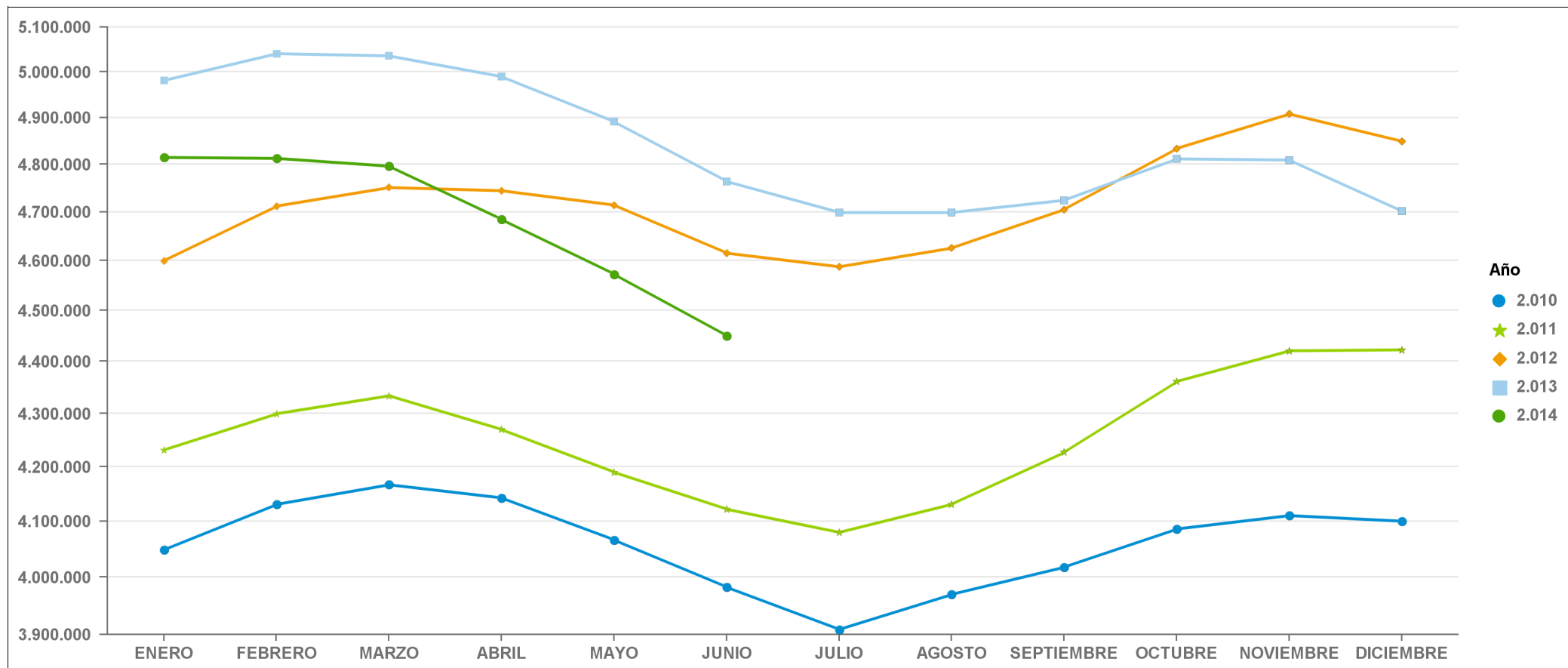


2010	199.805	203.863	206.325	207.127	203.959	197.637	193.723	196.625	199.275	201.451	204.031	204.171
2011	207.440	210.546	212.114	210.275	206.316	202.581	197.655	201.089	205.339	208.914	212.938	214.734
2012	219.929	224.328	225.735	225.792	223.591	217.931	217.105	219.979	222.437	225.796	228.287	226.227
2013	230.155	231.744	230.330	230.049	225.082	218.857	217.107	219.588	220.586	221.842	222.316	217.680
2014	220.048	218.445	215.418	210.128	204.642	199.048	0	0	0	0	0	0

ESTADÍSTICA NACIONAL

EVOLUCIÓN MENSUAL DEL PARO REGISTRADO

PERÍODO 2010 - 2014



Año	ENERO	FEBRERO	MARZO	ABRIL	MAYO	JUNIO	JULIO	AGOSTO	SEPTIEMBRE	OCTUBRE	NOVIEMBRE	DICIEMBRE
2010	4.048.493	4.130.625	4.166.613	4.142.425	4.066.202	3.982.368	3.908.578	3.969.661	4.017.763	4.085.976	4.110.294	4.100.073
2011	4.231.003	4.299.263	4.333.669	4.269.360	4.189.659	4.121.801	4.079.742	4.130.927	4.226.744	4.360.926	4.420.462	4.422.359
2012	4.599.829	4.712.098	4.750.867	4.744.235	4.714.122	4.615.269	4.587.455	4.625.634	4.705.279	4.833.521	4.907.817	4.848.723
2013	4.980.778	5.040.222	5.035.243	4.989.193	4.890.928	4.763.680	4.698.814	4.698.783	4.724.355	4.811.383	4.808.908	4.701.338
2014	4.814.435	4.812.486	4.795.866	4.684.301	4.572.385	4.449.701	0	0	0	0	0	0