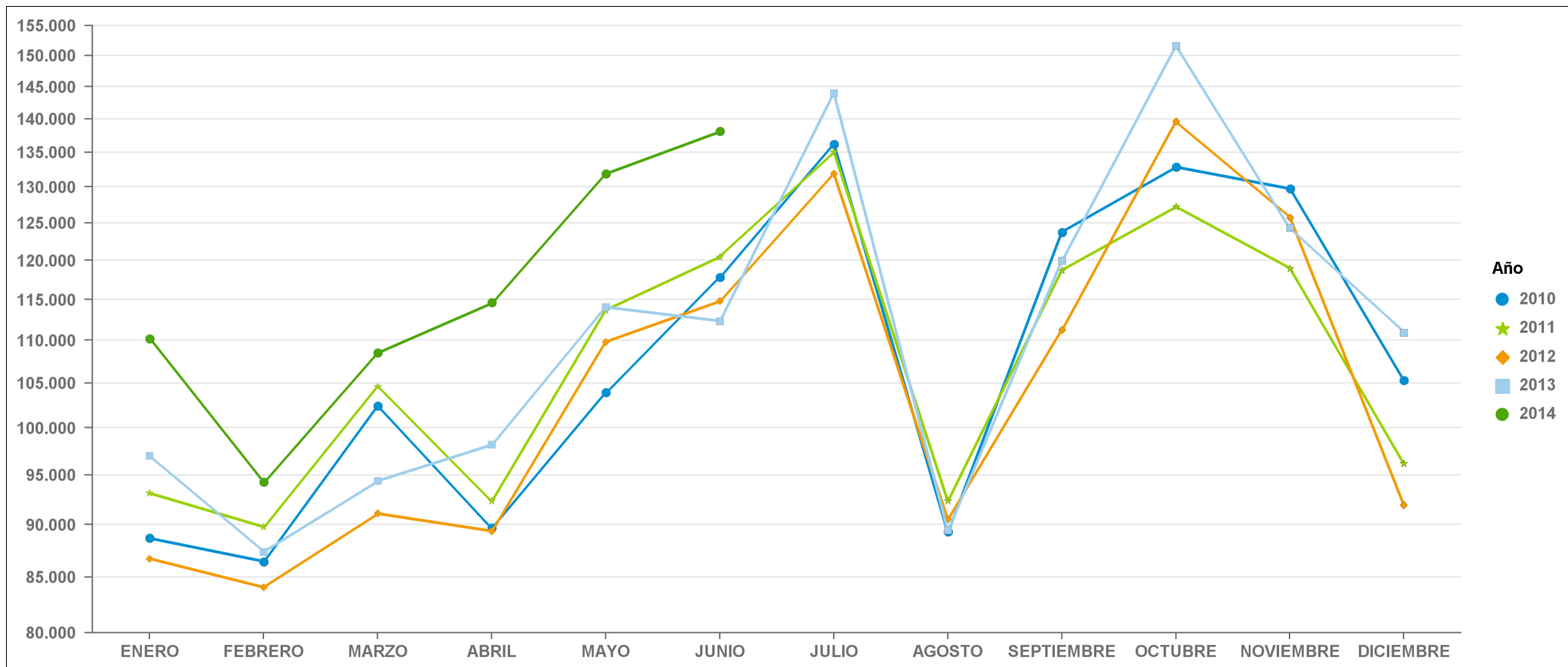


ESTADÍSTICA COMUNIDAD DE VALENCIANA

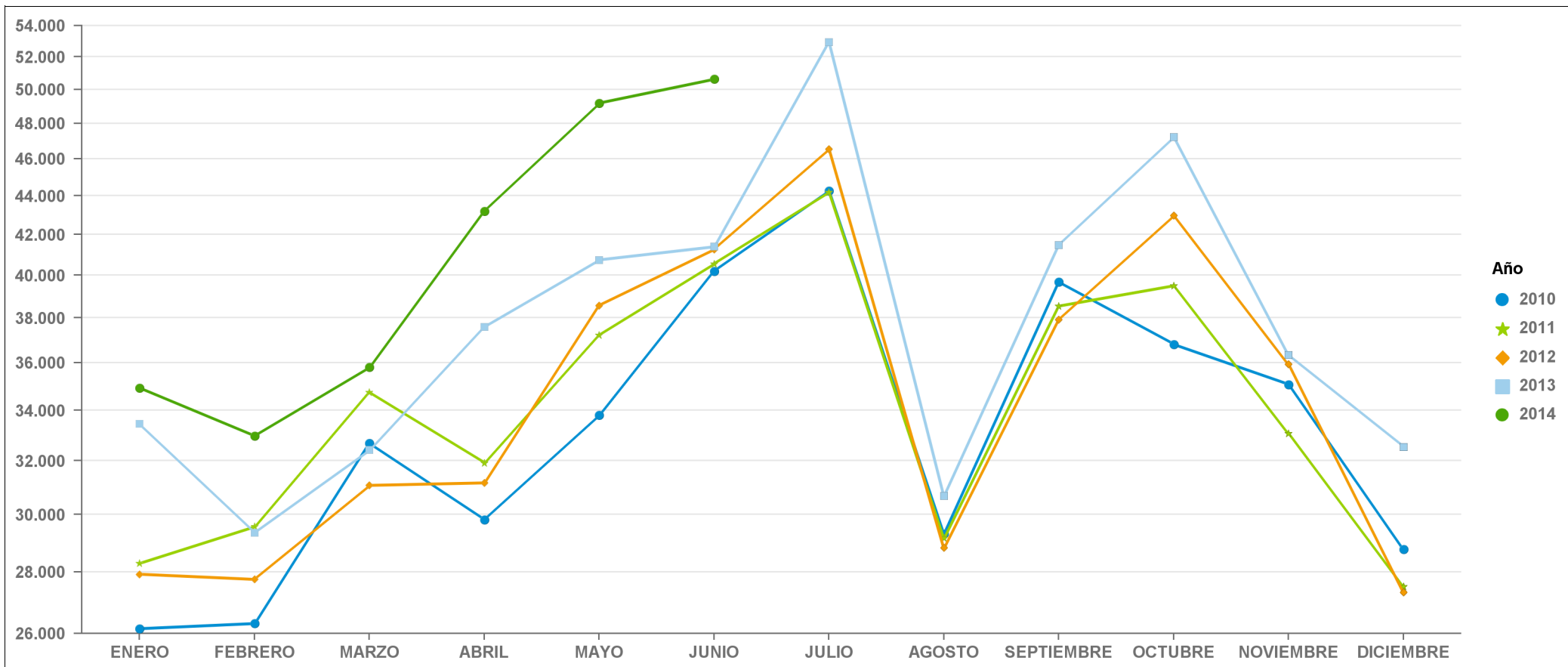
EVOLUCIÓN MENSUAL DE LA CONTRATACIÓN

PERÍODO 2010 - 2014



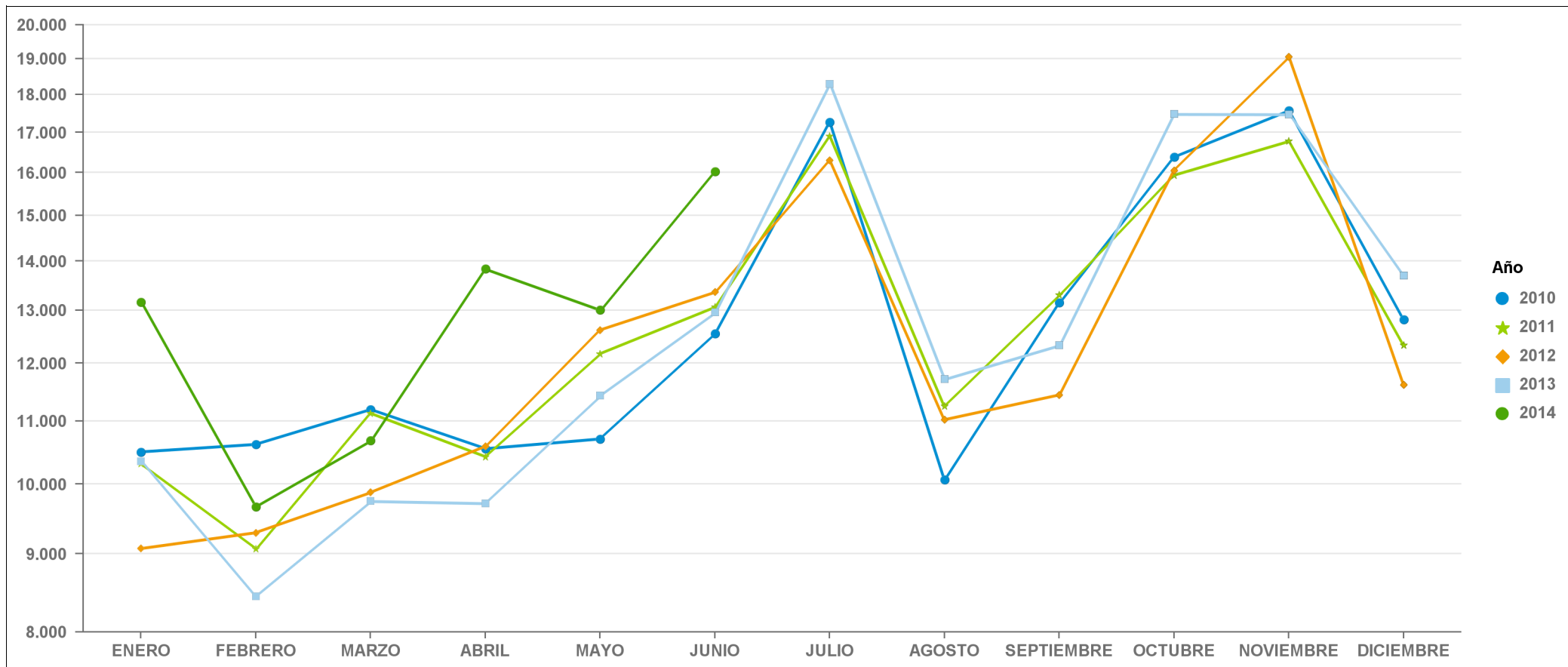
2010	88.676	86.457	102.399	89.686	103.915	117.844	136.196	89.288	123.772	132.861	129.733	105.347
2011	93.141	89.758	104.610	92.360	113.670	120.493	135.075	92.373	118.725	127.248	118.943	96.201
2012	86.734	84.050	91.092	89.365	109.813	114.803	131.873	90.553	111.276	139.578	125.720	91.954
2013	97.001	87.360	94.376	98.188	114.057	112.341	143.975	89.436	119.981	151.553	124.320	110.927
2014	110.174	94.281	108.535	114.621	131.920	138.156	0	0	0	0	0	0

ALICANTE



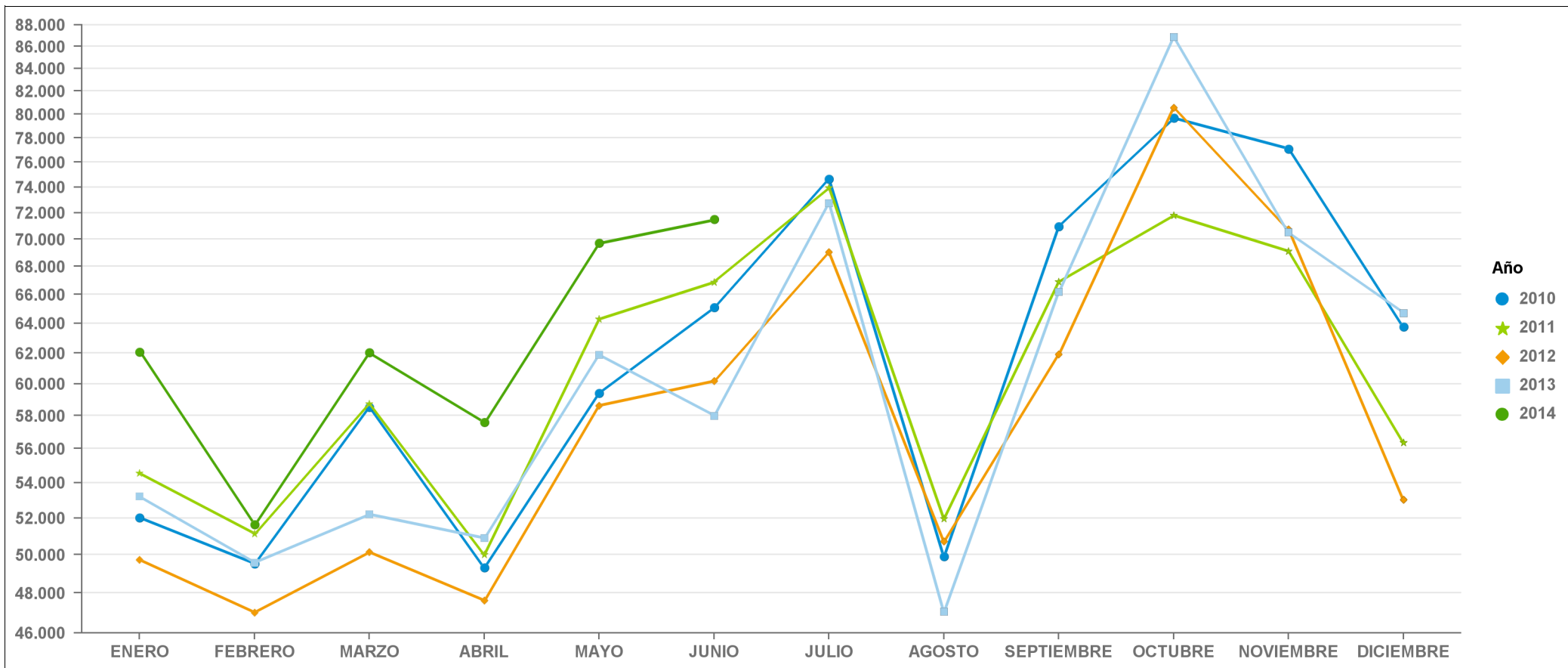
2010	26.150	26.313	32.682	29.806	33.810	40.194	44.274	29.317	39.672	36.807	35.070	28.774
2011	28.281	29.561	34.748	31.919	37.215	40.550	44.199	29.153	38.536	39.494	33.065	27.513
2012	27.920	27.746	31.067	31.160	38.570	41.258	46.546	28.813	37.913	42.966	35.932	27.322
2013	33.444	29.338	32.416	37.574	40.738	41.389	52.931	30.678	41.470	47.225	36.340	32.534
2014	34.932	32.963	35.806	43.188	49.187	50.624	0	0	0	0	0	0

CASTELLÓN



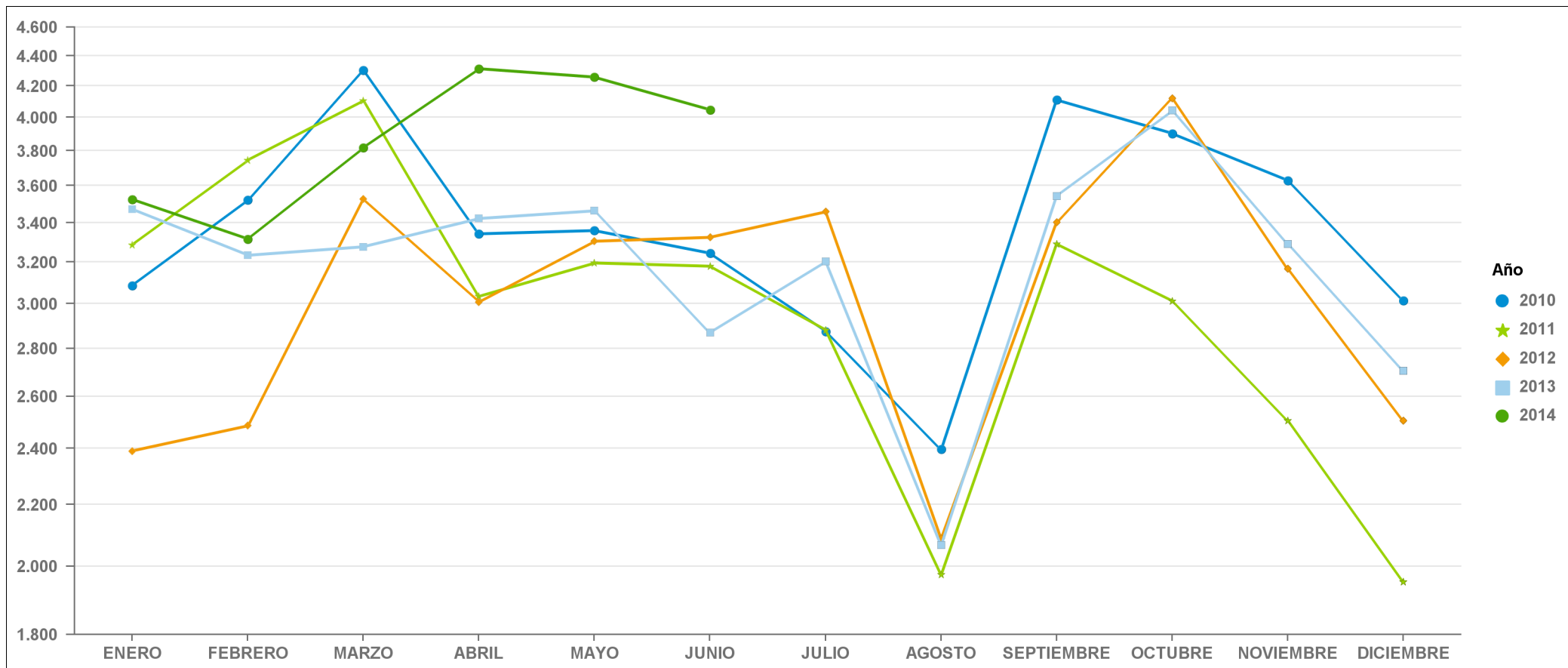
2010	10.498	10.618	11.194	10.548	10.706	12.552	17.271	10.068	13.146	16.378	17.570	12.822
2011	10.313	9.067	11.129	10.419	12.174	13.063	16.903	11.245	13.303	15.934	16.775	12.333
2012	9.073	9.294	9.875	10.591	12.617	13.360	16.299	11.020	11.443	16.055	19.055	11.619
2013	10.350	8.443	9.748	9.716	11.429	12.958	18.284	11.714	12.332	17.479	17.472	13.694
2014	13.157	9.666	10.681	13.842	13.005	16.031	0	0	0	0	0	0

VALENCIA



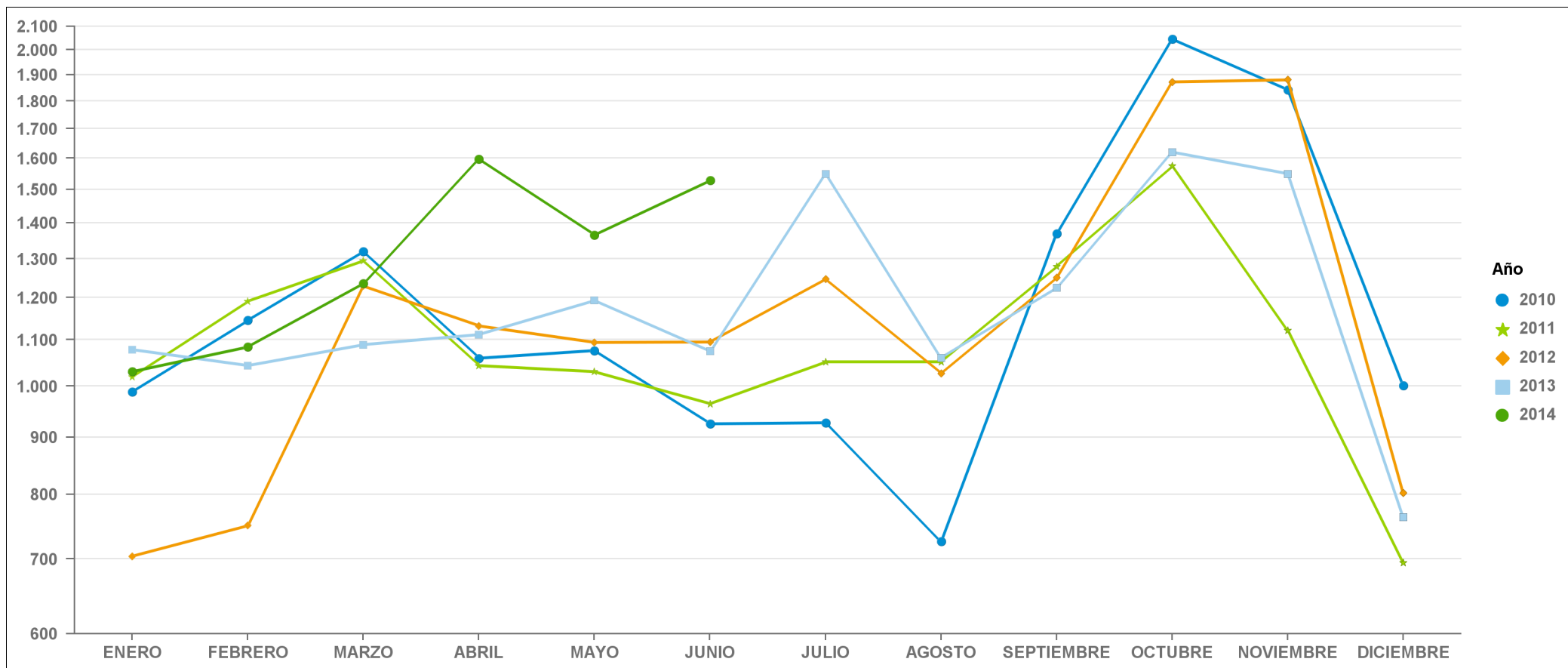
2010	52.028	49.526	58.523	49.332	59.399	65.098	74.651	49.903	70.954	79.676	77.093	63.751
2011	54.547	51.130	58.733	50.022	64.281	66.880	73.973	51.975	66.886	71.820	69.103	56.355
2012	49.741	47.010	50.150	47.614	58.626	60.185	69.028	50.720	61.920	80.557	70.733	53.013
2013	53.207	49.579	52.212	50.898	61.890	57.994	72.760	47.044	66.179	86.849	70.508	64.699
2014	62.085	51.652	62.048	57.591	69.728	71.501	0	0	0	0	0	0

ALICANTE



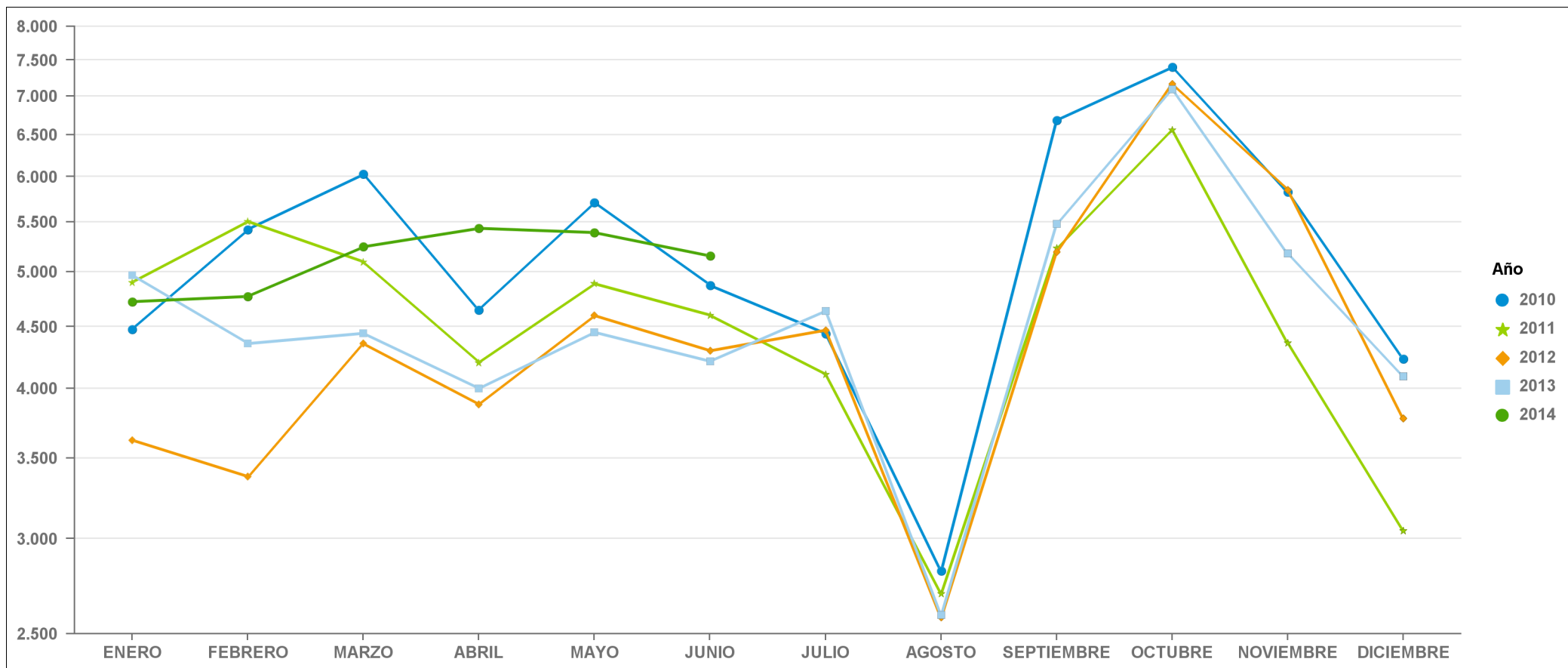
2010	3.086	3.522	4.302	3.342	3.359	3.243	2.874	2.396	4.110	3.902	3.628	3.015
2011	3.286	3.745	4.106	3.034	3.195	3.179	2.880	1.975	3.290	3.012	2.505	1.953
2012	2.390	2.485	3.526	3.007	3.304	3.324	3.458	2.089	3.403	4.121	3.166	2.504
2013	3.472	3.233	3.276	3.422	3.463	2.869	3.202	2.067	3.543	4.043	3.291	2.705
2014	3.525	3.315	3.818	4.313	4.257	4.047	0	0	0	0	0	0

CASTELLÓN



2010	988	1.145	1.320	1.059	1.076	925	927	726	1.370	2.045	1.841	1.001
2011	1.019	1.191	1.295	1.043	1.030	964	1.051	1.051	1.280	1.574	1.122	695
2012	704	750	1.229	1.132	1.094	1.095	1.247	1.026	1.251	1.872	1.880	802
2013	1.078	1.043	1.089	1.112	1.193	1.074	1.549	1.060	1.225	1.620	1.549	763
2014	1.030	1.084	1.236	1.597	1.365	1.528	0	0	0	0	0	0

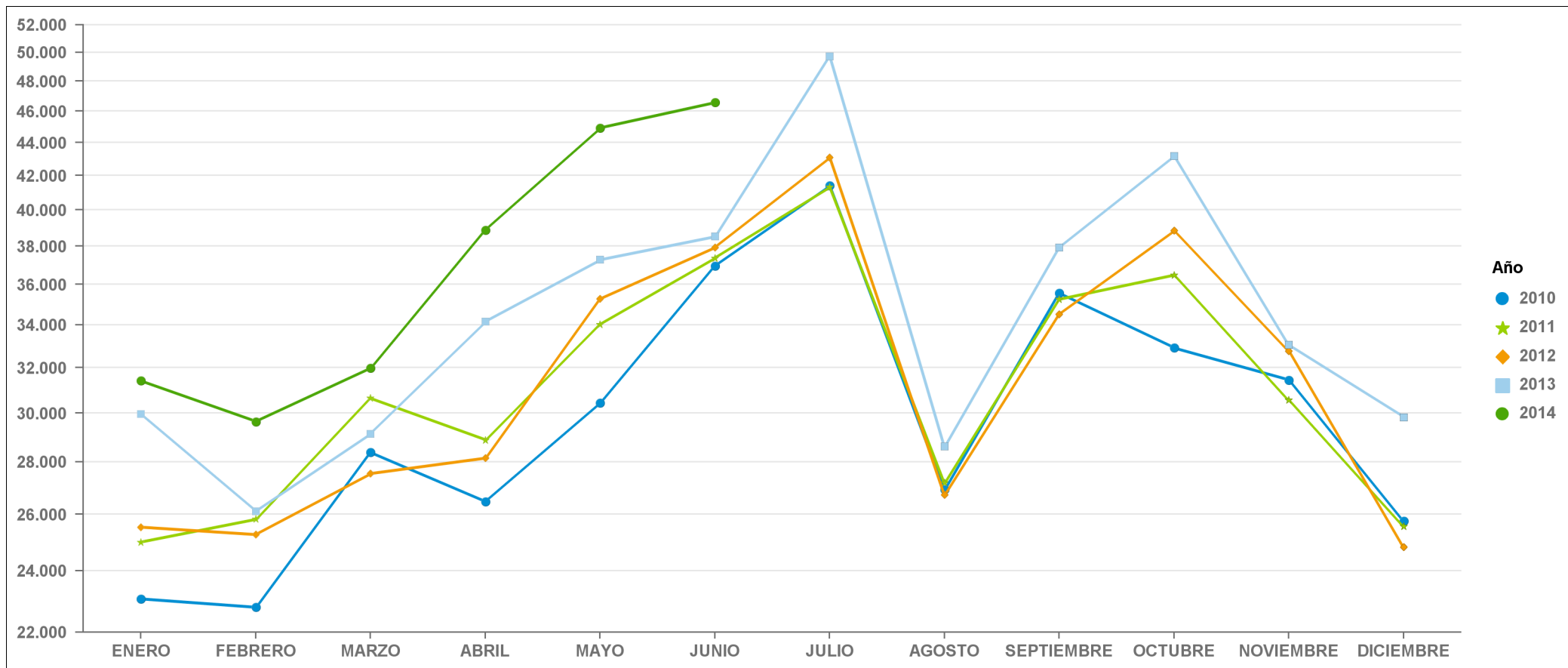
VALENCIA



2010	4.479	5.421	6.026	4.648	5.710	4.871	4.440	2.819	6.680	7.397	5.823	4.232
2011	4.899	5.506	5.094	4.201	4.887	4.600	4.107	2.700	5.230	6.557	4.361	3.046
2012	3.622	3.377	4.357	3.877	4.598	4.297	4.471	2.579	5.193	7.165	5.845	3.774
2013	4.968	4.357	4.444	3.997	4.453	4.211	4.639	2.591	5.480	7.088	5.176	4.094
2014	4.721	4.769	5.244	5.433	5.389	5.152	0	0	0	0	0	0

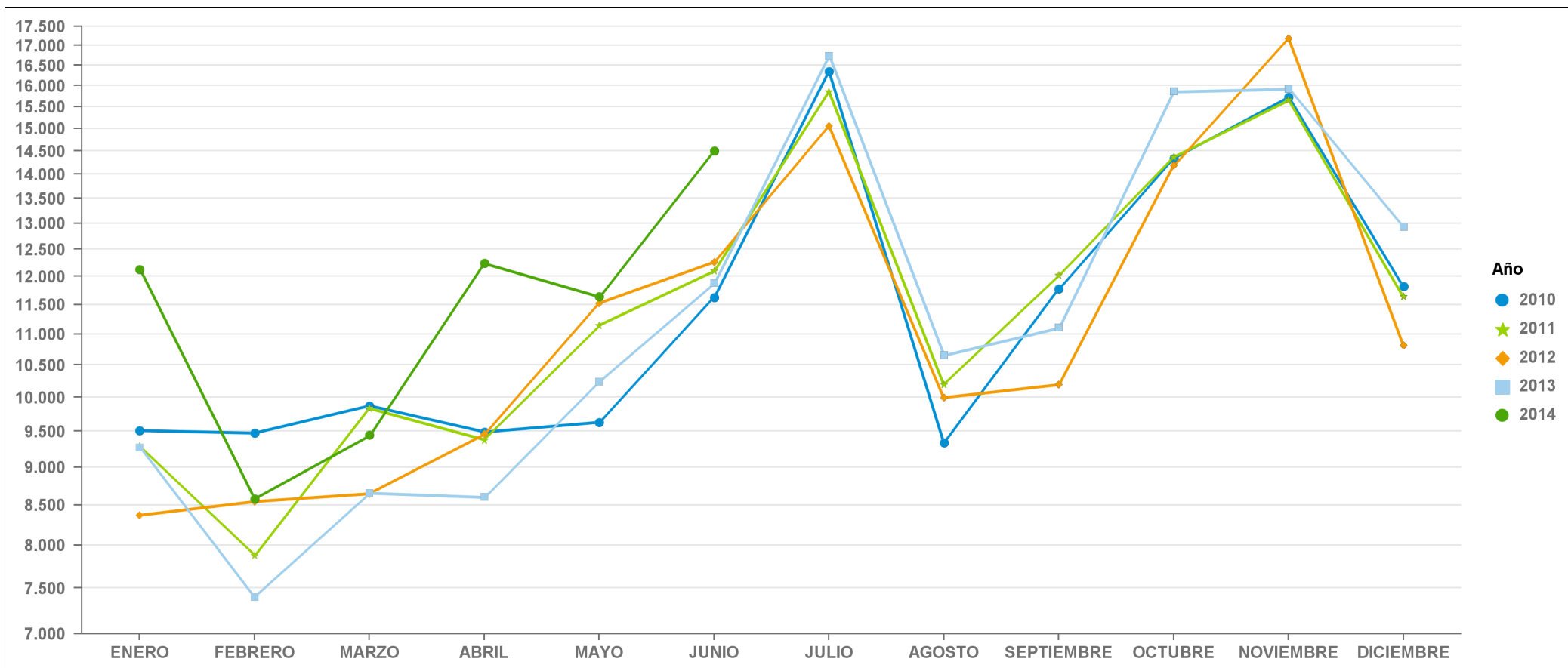
**ESTADÍSTICA COMUNIDAD VALENCIANA
SEGUIMIENTO PROVINCIAL DE LA CONTRATACIÓN INDEFINIDA
PERÍODO 2010 - 2014**

ALICANTE



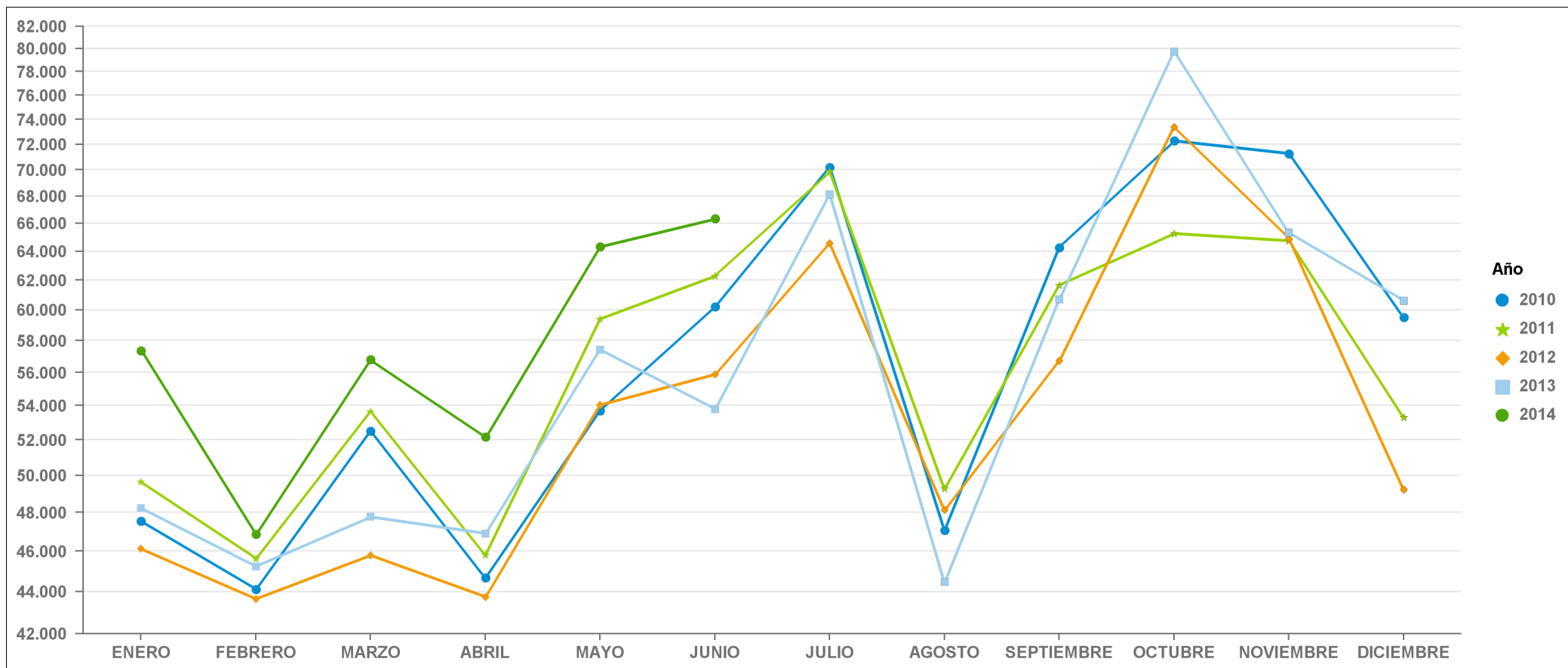
2010	23.064	22.791	28.380	26.464	30.451	36.951	41.400	26.921	35.562	32.905	31.442	25.759
2011	24.995	25.816	30.642	28.885	34.020	37.371	41.319	27.178	35.246	36.482	30.560	25.560
2012	25.530	25.261	27.541	28.153	35.266	37.934	43.088	26.724	34.510	38.845	32.766	24.818
2013	29.972	26.105	29.140	34.152	37.275	38.520	49.729	28.611	37.927	43.182	33.049	29.829
2014	31.407	29.648	31.988	38.875	44.930	46.577	0	0	0	0	0	0

CASTELLÓN



2010	9.510	9.473	9.874	9.489	9.630	11.627	16.344	9.342	11.776	14.333	15.729	11.821
2011	9.294	7.876	9.834	9.376	11.144	12.099	15.852	10.194	12.023	14.360	15.653	11.638
2012	8.369	8.544	8.646	9.459	11.523	12.265	15.052	9.994	10.192	14.183	17.175	10.817
2013	9.272	7.400	8.659	8.604	10.236	11.884	16.735	10.654	11.107	15.859	15.923	12.931
2014	12.127	8.582	9.445	12.245	11.640	14.503	0	0	0	0	0	0

VALENCIA



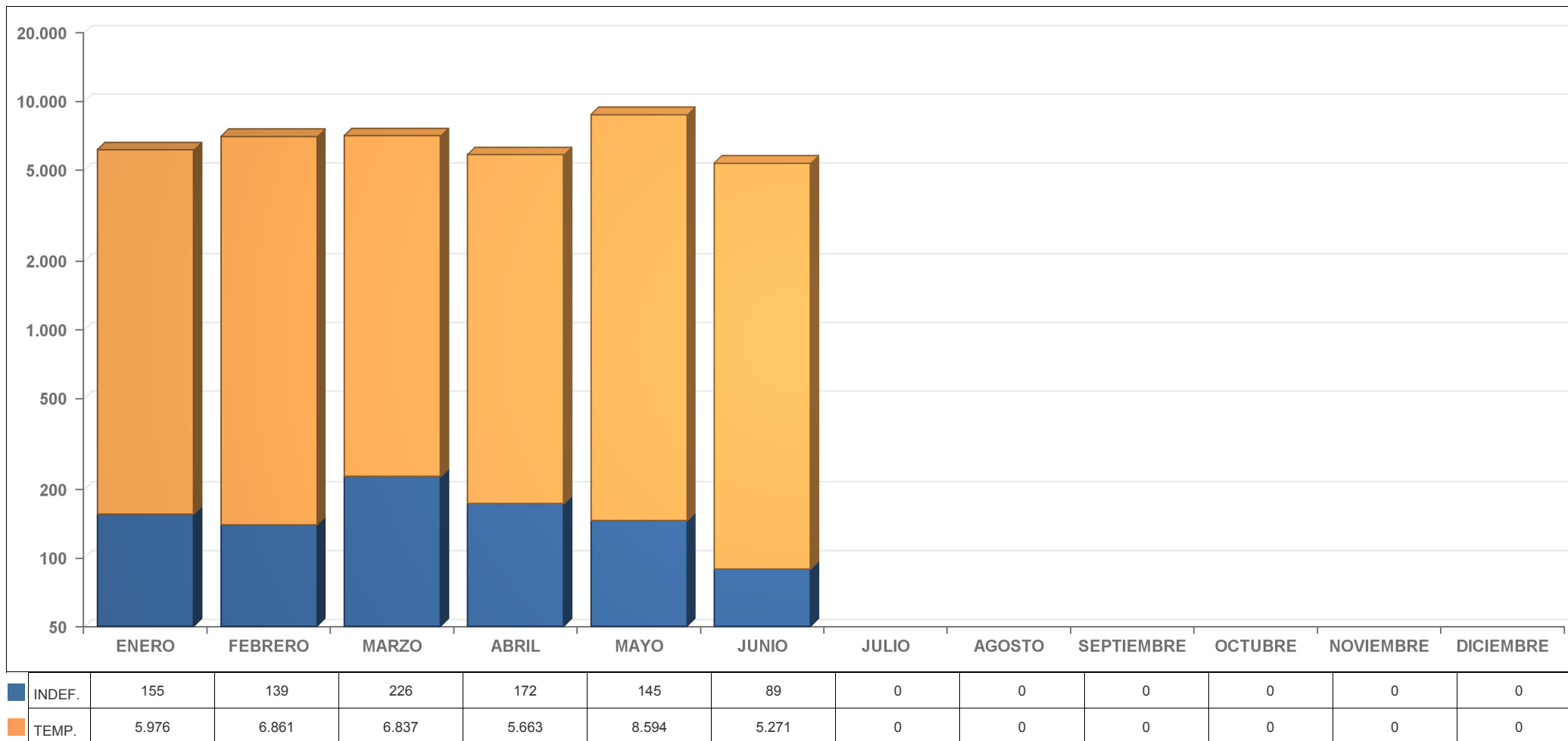
2010	47.549	44.105	52.497	44.684	53.689	60.227	70.211	47.084	64.274	72.279	71.270	59.519
2011	49.648	45.624	53.639	45.821	59.394	62.280	69.866	49.275	61.656	65.263	64.742	53.309
2012	46.119	43.633	45.793	43.737	54.028	55.888	64.557	48.141	56.727	73.392	64.888	49.239
2013	48.239	45.222	47.768	46.901	57.437	53.783	68.121	44.453	60.699	79.761	65.332	60.605
2014	57.364	46.883	56.804	52.158	64.339	66.349	0	0	0	0	0	0

ESTADÍSTICA COMUNIDAD VALENCIANA
SEGUIMIENTO PROVINCIAL DE LA CONTRATACIÓN TEMPORAL
PERÍODO 2010 - 2014

ESTADÍSTICA PROVINCIA DE VALENCIA

EVOLUCIÓN MENSUAL DE LA CONTRATACIÓN TEMPORAL E INDEFINIDA POR SECTORES ECONÓMICOS AÑO 2014

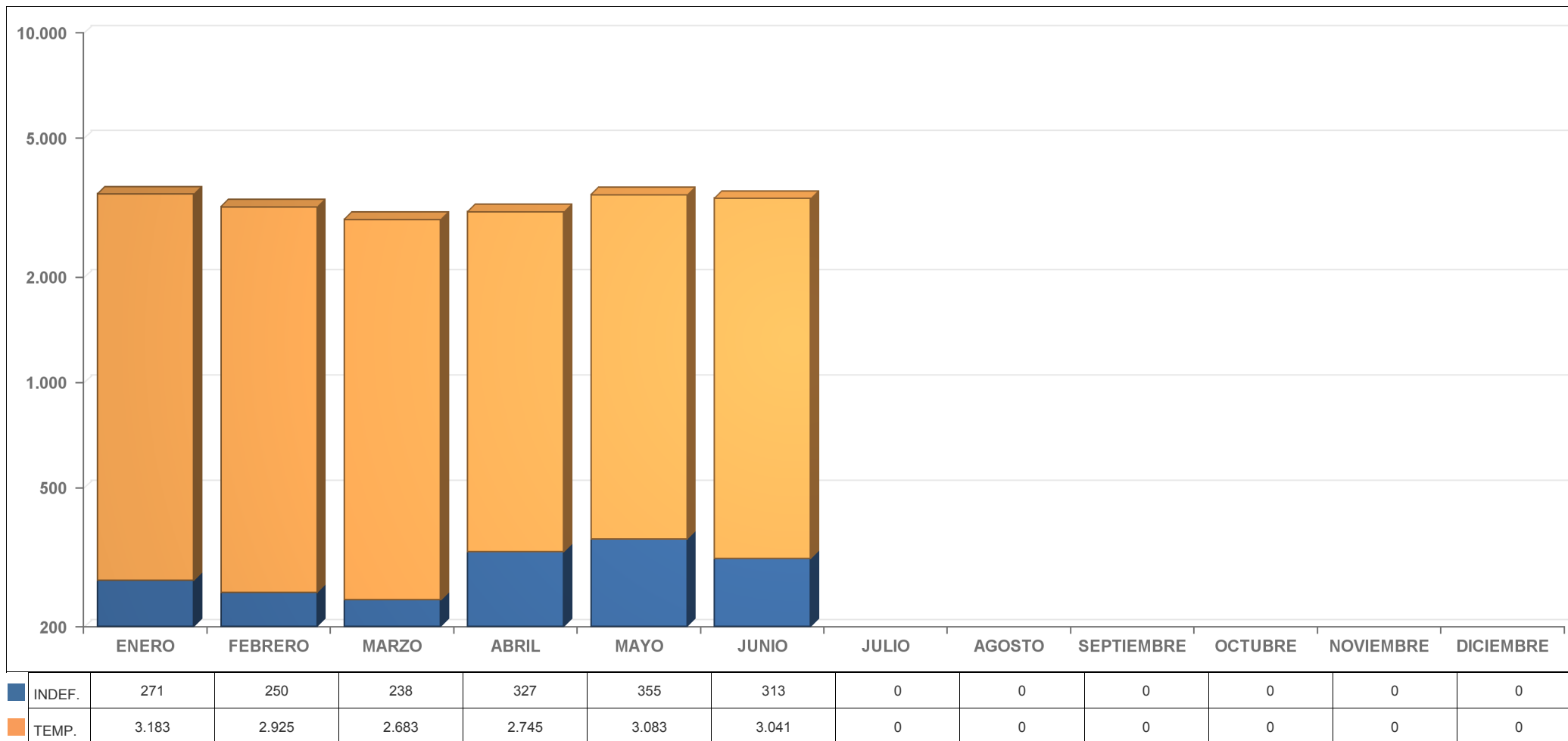
Agricultura



ESTADÍSTICA PROVINCIA DE VALENCIA

EVOLUCIÓN MENSUAL DE LA CONTRATACIÓN TEMPORAL E INDEFINIDA POR SECTORES ECONÓMICOS AÑO 2014

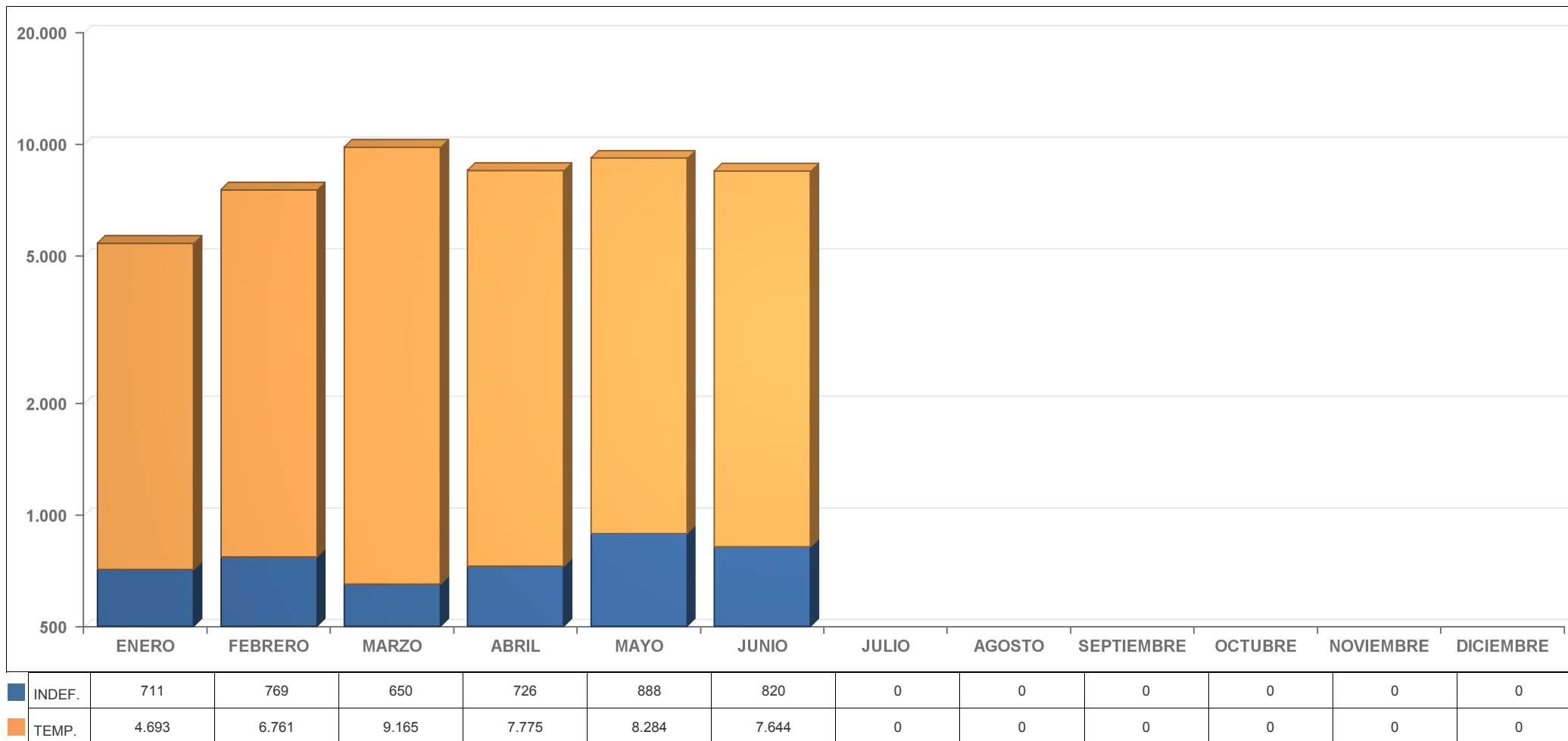
Construcción



ESTADÍSTICA PROVINCIA DE VALENCIA

EVOLUCIÓN MENSUAL DE LA CONTRATACIÓN TEMPORAL E INDEFINIDA POR SECTORES ECONÓMICOS AÑO 2014

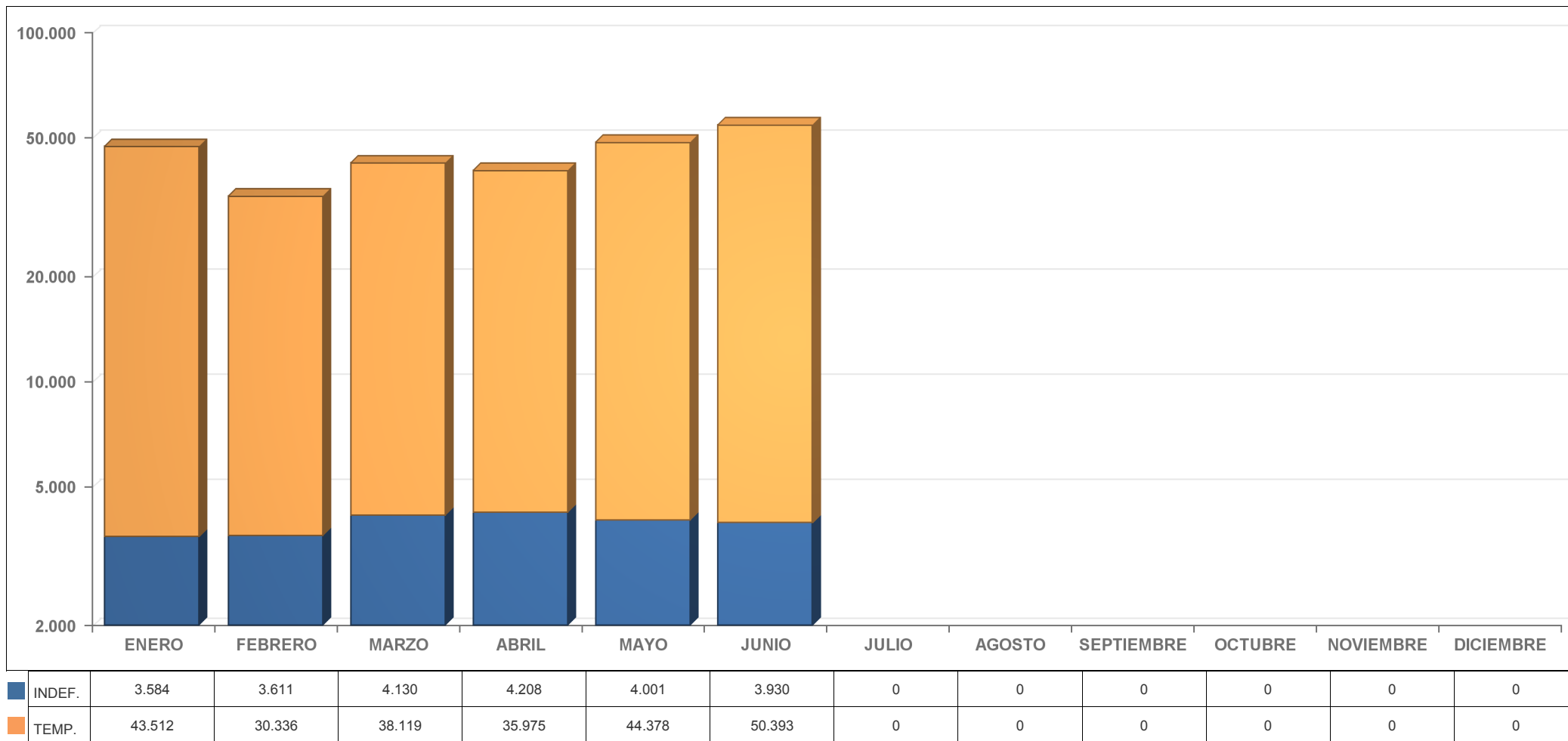
Industria



ESTADÍSTICA PROVINCIA DE VALENCIA

EVOLUCIÓN MENSUAL DE LA CONTRATACIÓN TEMPORAL E INDEFINIDA POR SECTORES ECONÓMICOS AÑO 2014

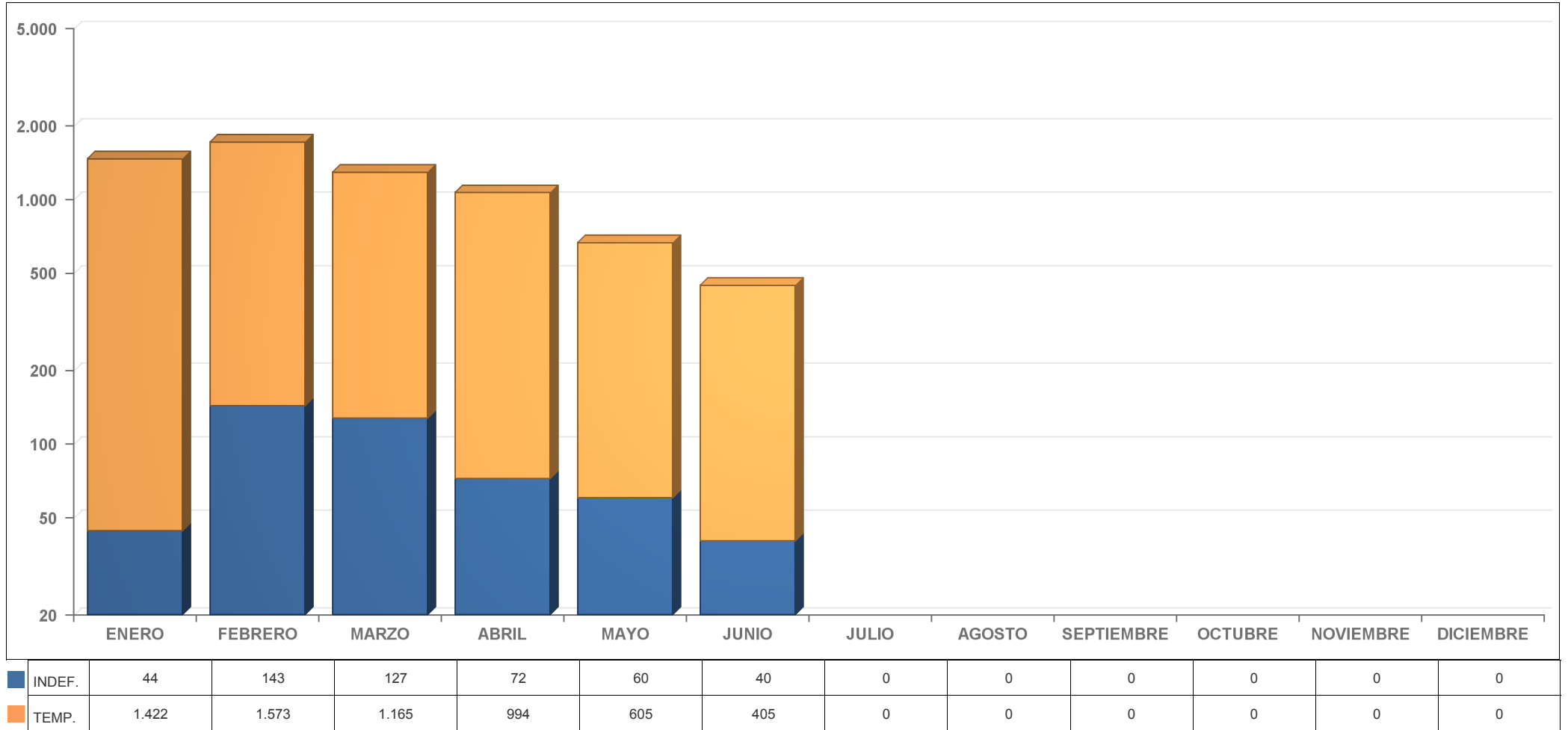
Servicios



ESTADÍSTICA PROVINCIA DE CASTELLÓN

EVOLUCIÓN MENSUAL DE LA CONTRATACIÓN TEMPORAL E INDEFINIDA POR SECTORES ECONÓMICOS AÑO 2014

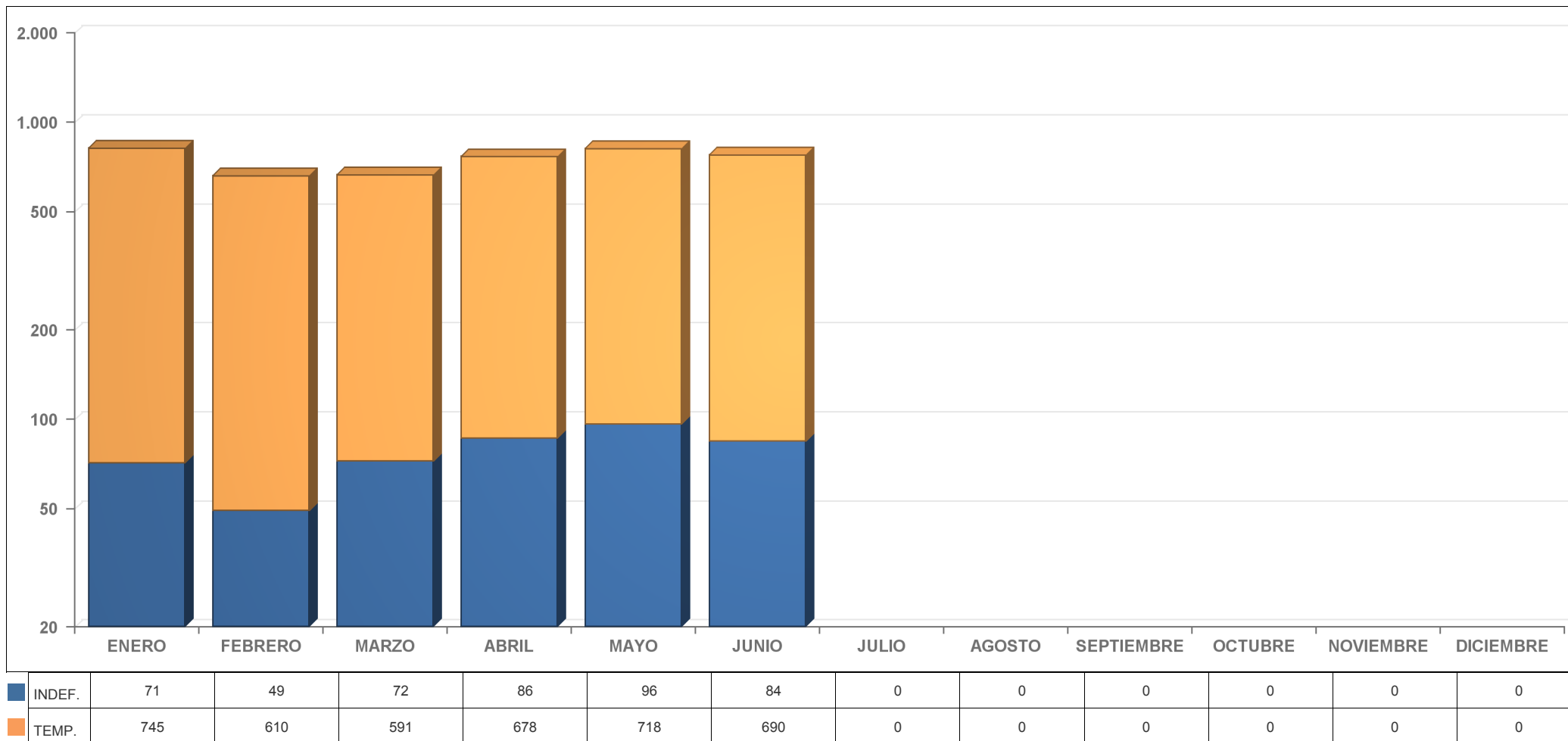
Agricultura



ESTADÍSTICA PROVINCIA DE CASTELLÓN

EVOLUCIÓN MENSUAL DE LA CONTRATACIÓN TEMPORAL E INDEFINIDA POR SECTORES ECONÓMICOS AÑO 2014

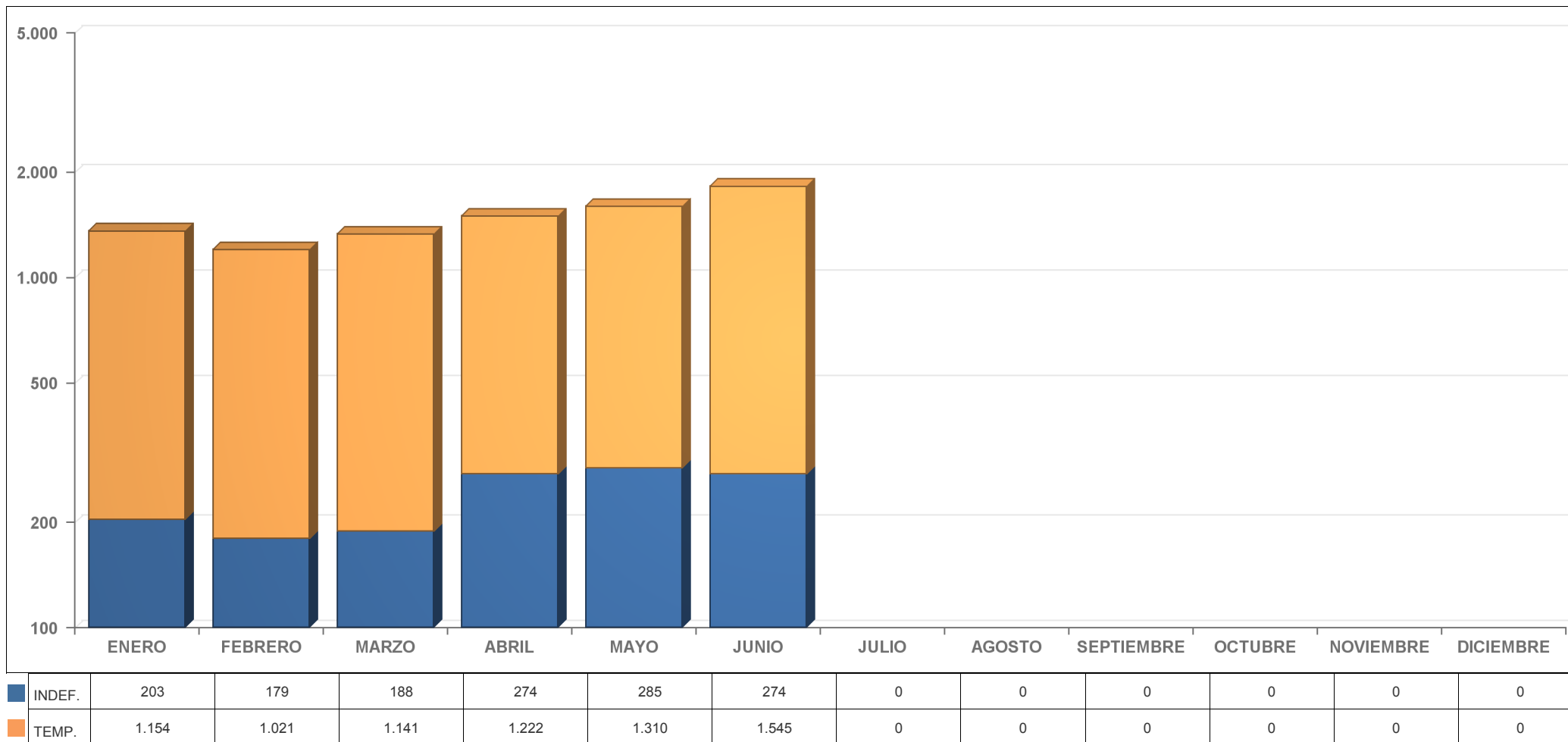
Construcción



ESTADÍSTICA PROVINCIA DE CASTELLÓN

EVOLUCIÓN MENSUAL DE LA CONTRATACIÓN TEMPORAL E INDEFINIDA POR SECTORES ECONÓMICOS AÑO 2014

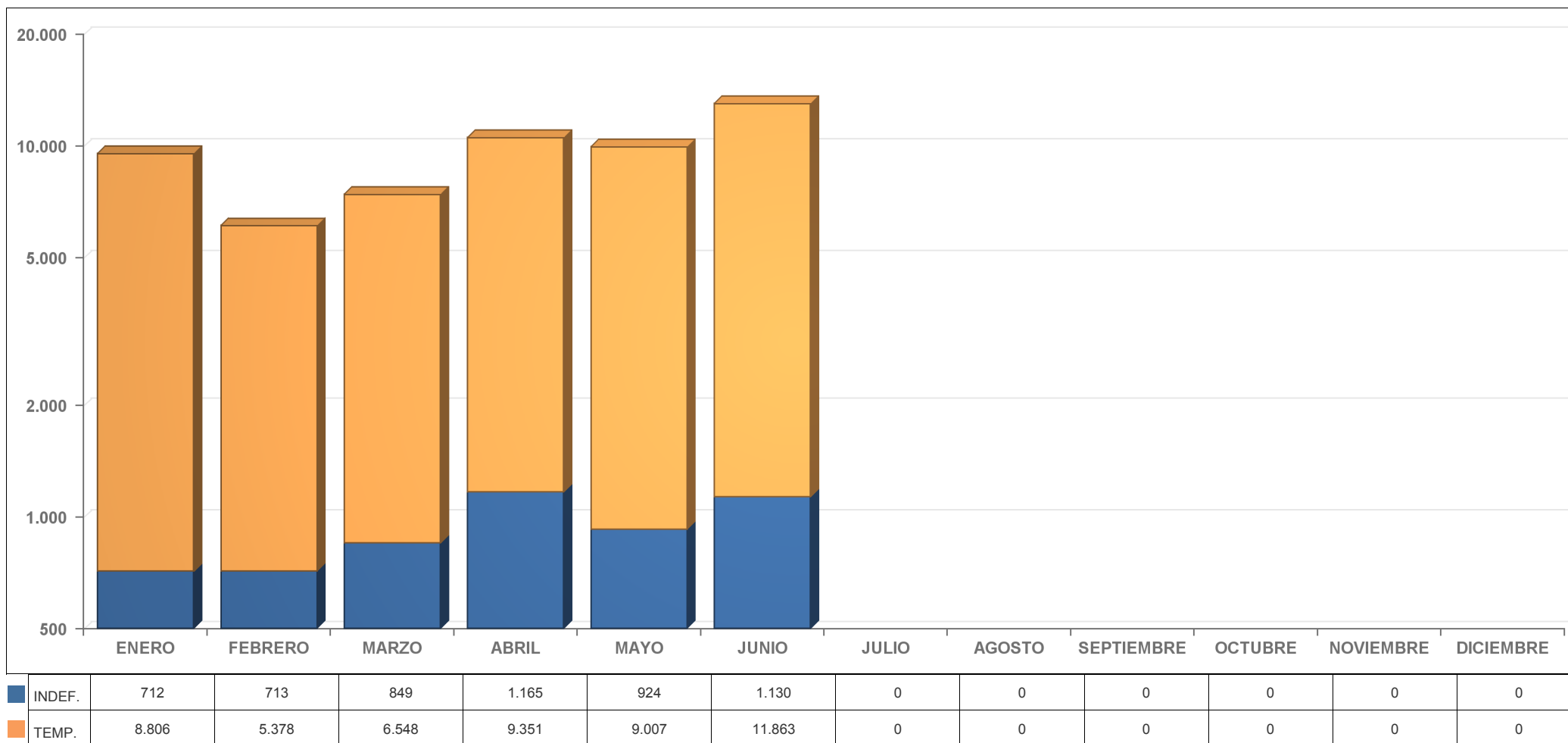
Industria



ESTADÍSTICA PROVINCIA DE CASTELLÓN

EVOLUCIÓN MENSUAL DE LA CONTRATACIÓN TEMPORAL E INDEFINIDA POR SECTORES ECONÓMICOS AÑO 2014

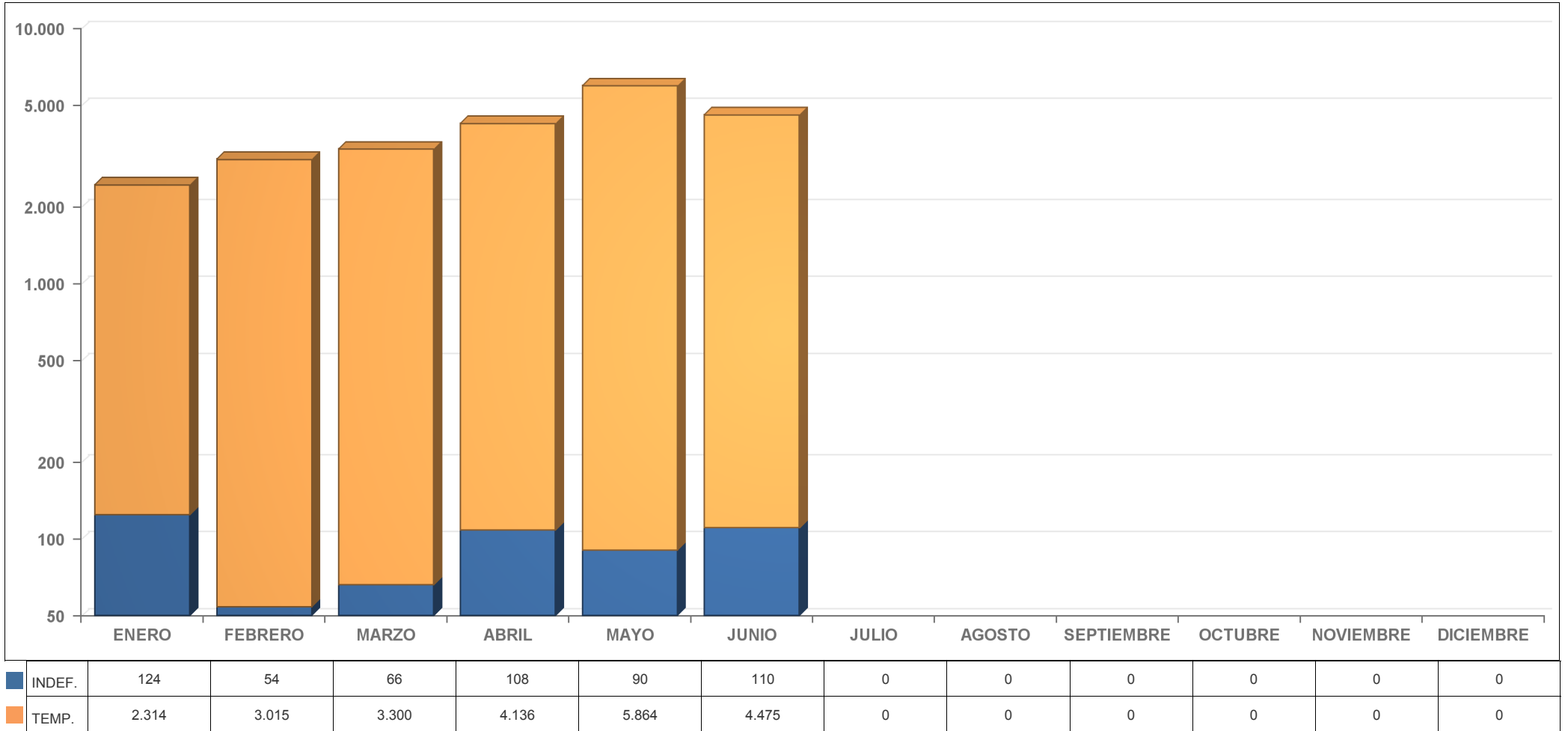
Servicios



ESTADÍSTICA PROVINCIA DE ALICANTE

EVOLUCIÓN MENSUAL DE LA CONTRATACIÓN TEMPORAL E INDEFINIDA POR SECTORES ECONÓMICOS AÑO 2014

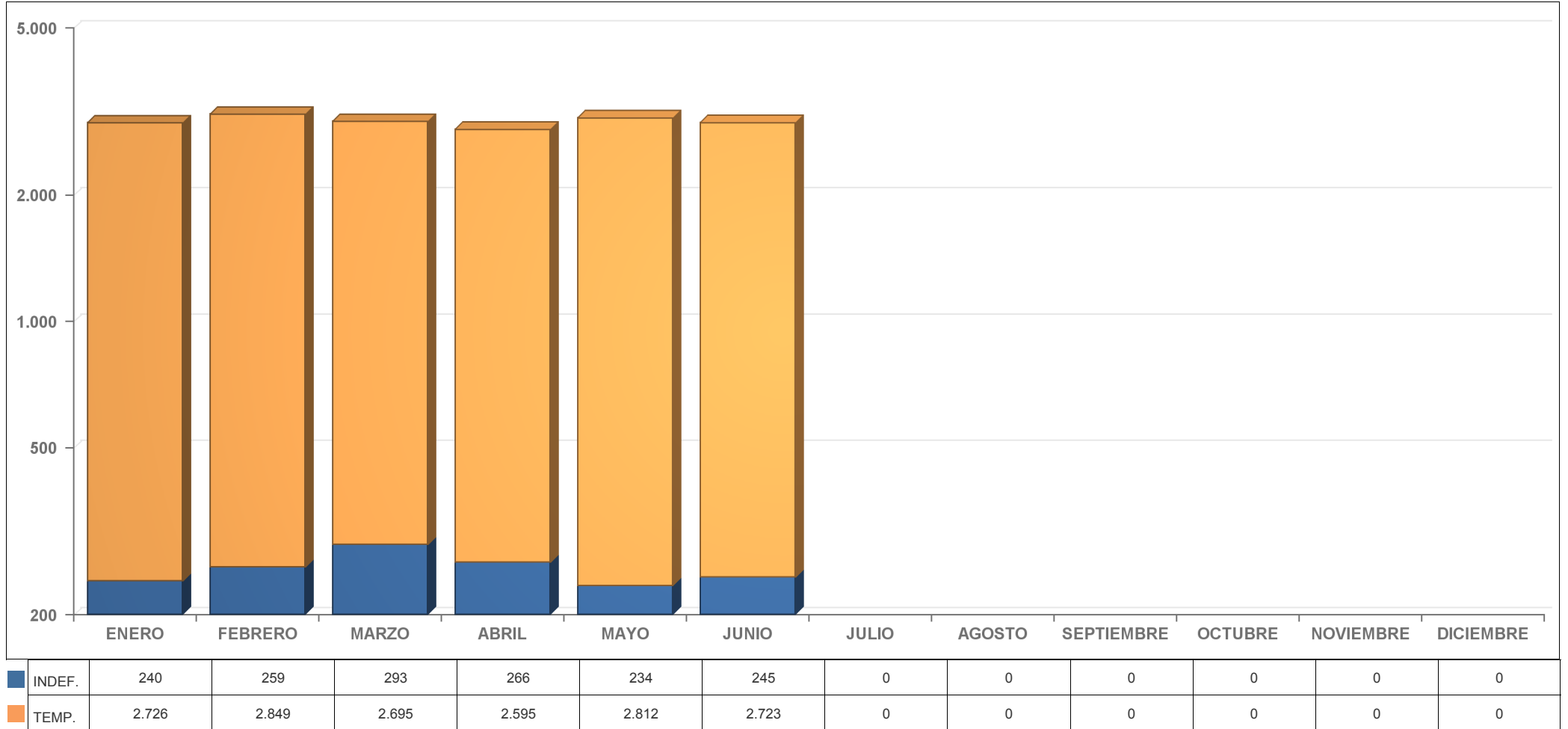
Agricultura



ESTADÍSTICA PROVINCIA DE ALICANTE

EVOLUCIÓN MENSUAL DE LA CONTRATACIÓN TEMPORAL E INDEFINIDA POR SECTORES ECONÓMICOS AÑO 2014

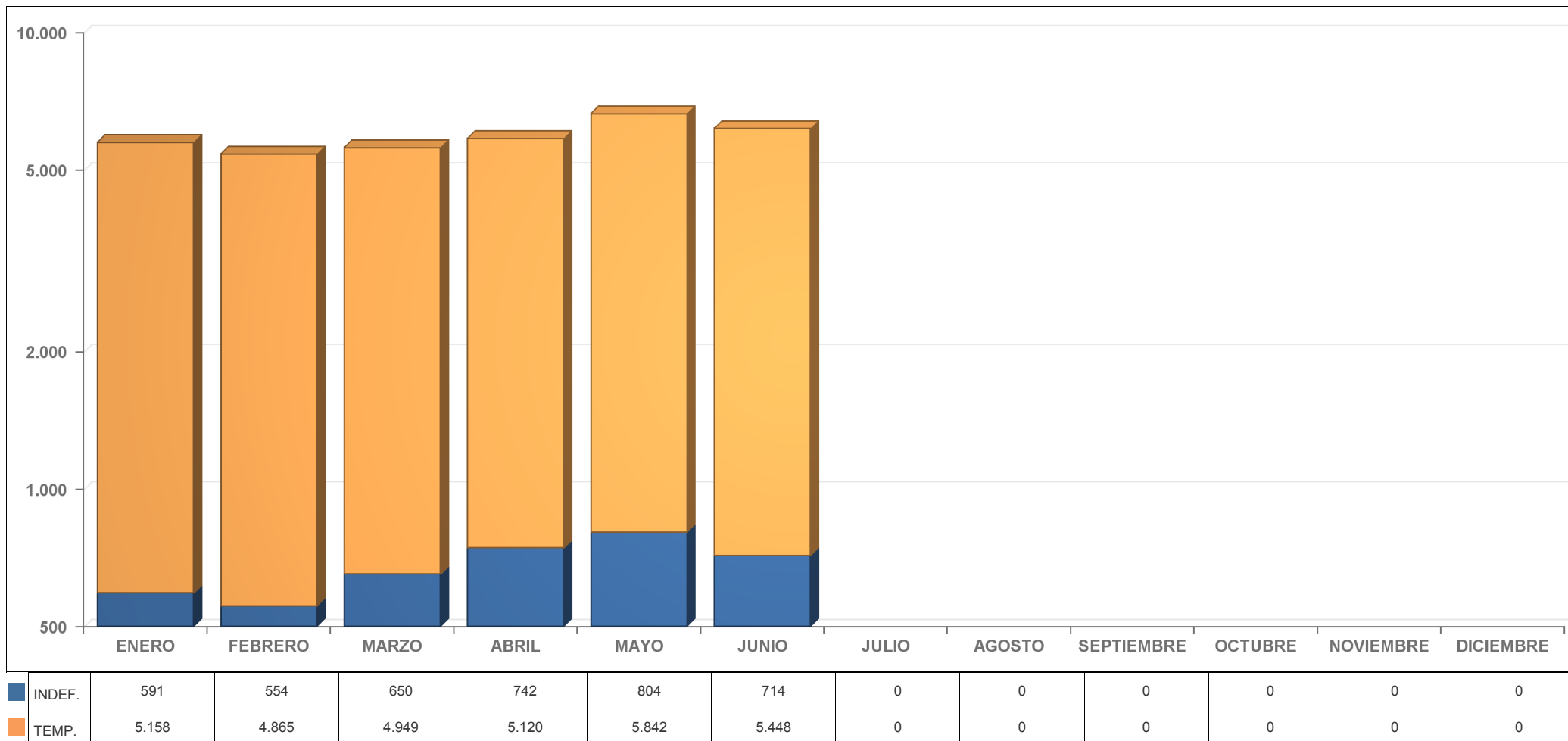
Construcción



ESTADÍSTICA PROVINCIA DE ALICANTE

EVOLUCIÓN MENSUAL DE LA CONTRATACIÓN TEMPORAL E INDEFINIDA POR SECTORES ECONÓMICOS AÑO 2014

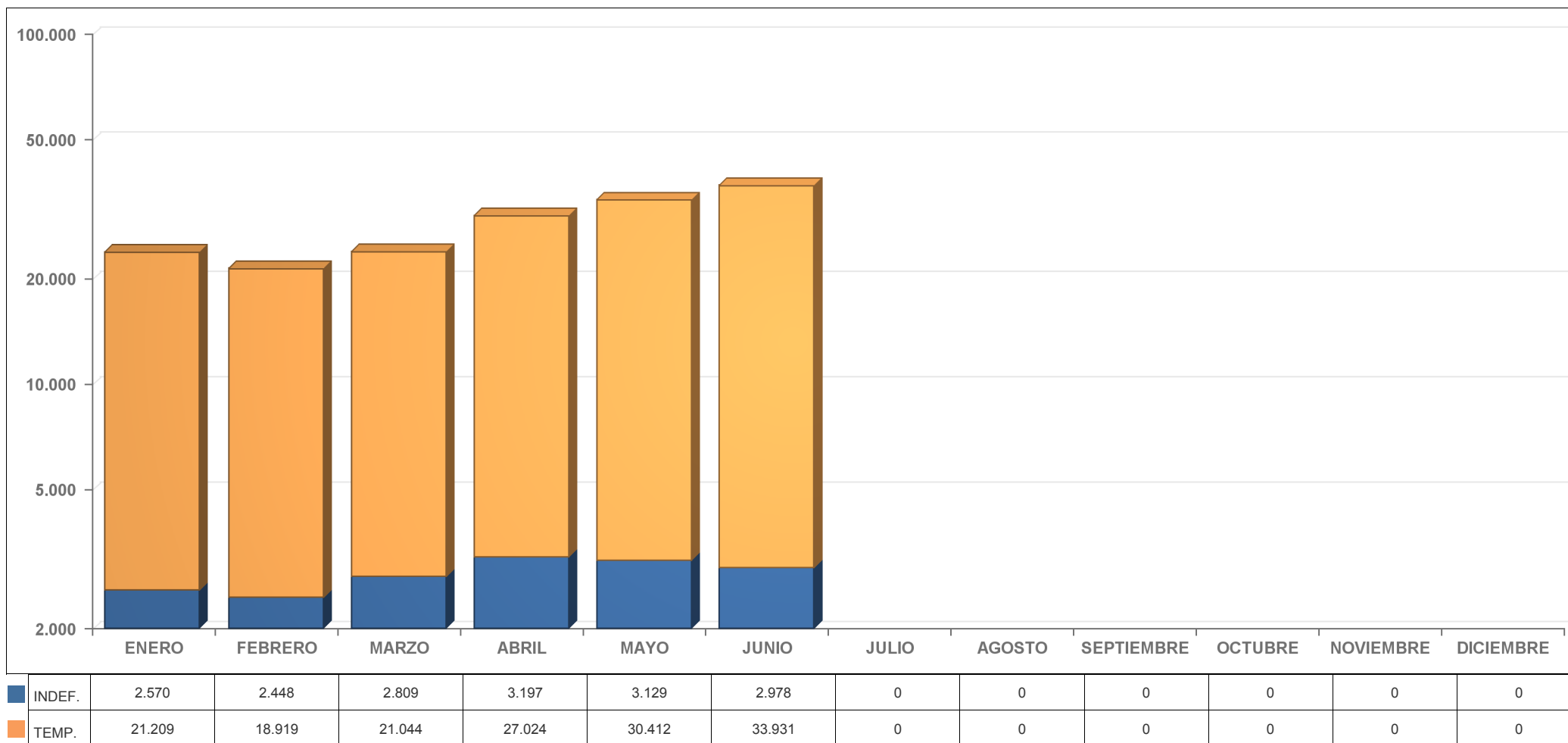
Industria



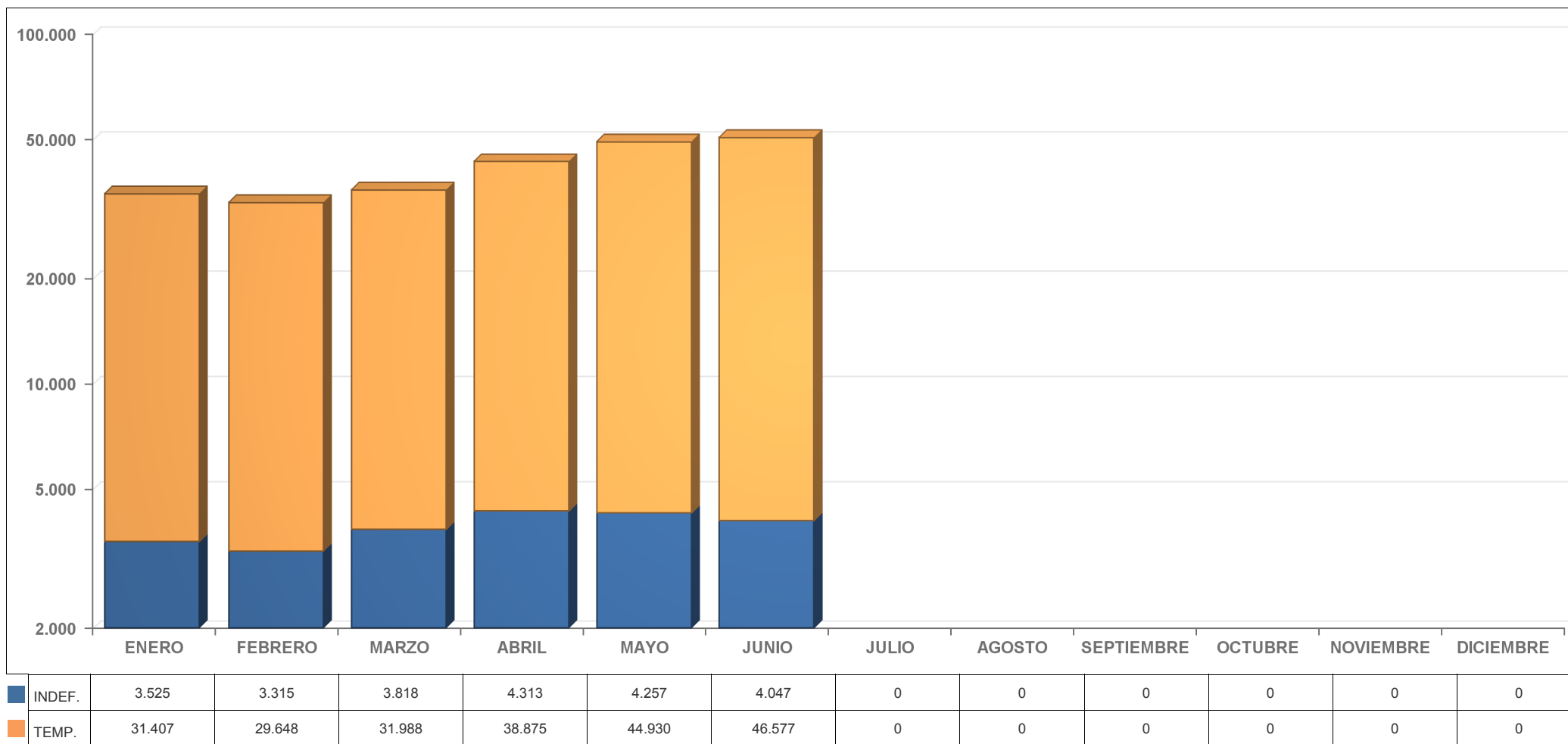
ESTADÍSTICA PROVINCIA DE ALICANTE

EVOLUCIÓN MENSUAL DE LA CONTRATACIÓN TEMPORAL E INDEFINIDA POR SECTORES ECONÓMICOS AÑO 2014

Servicios



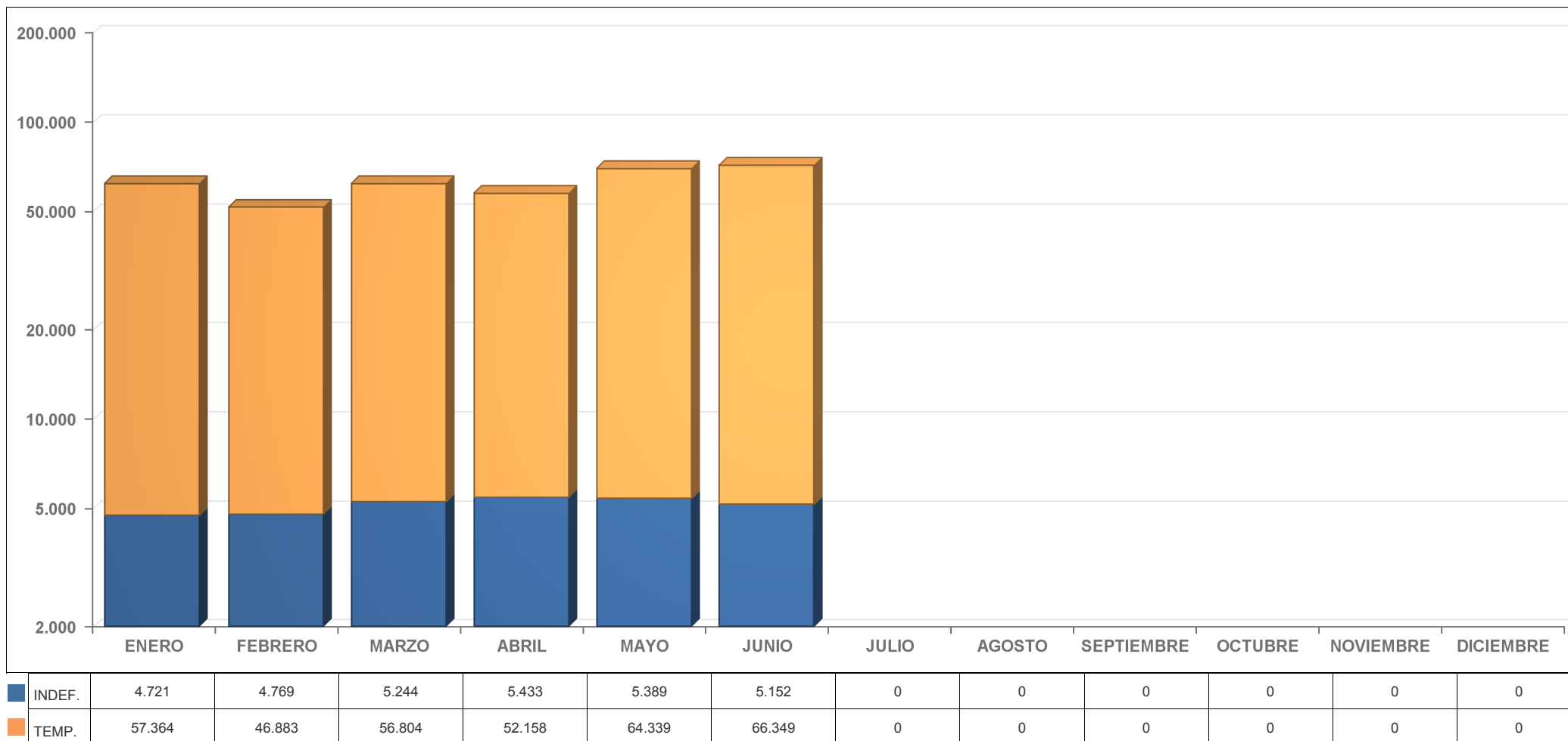
ALICANTE



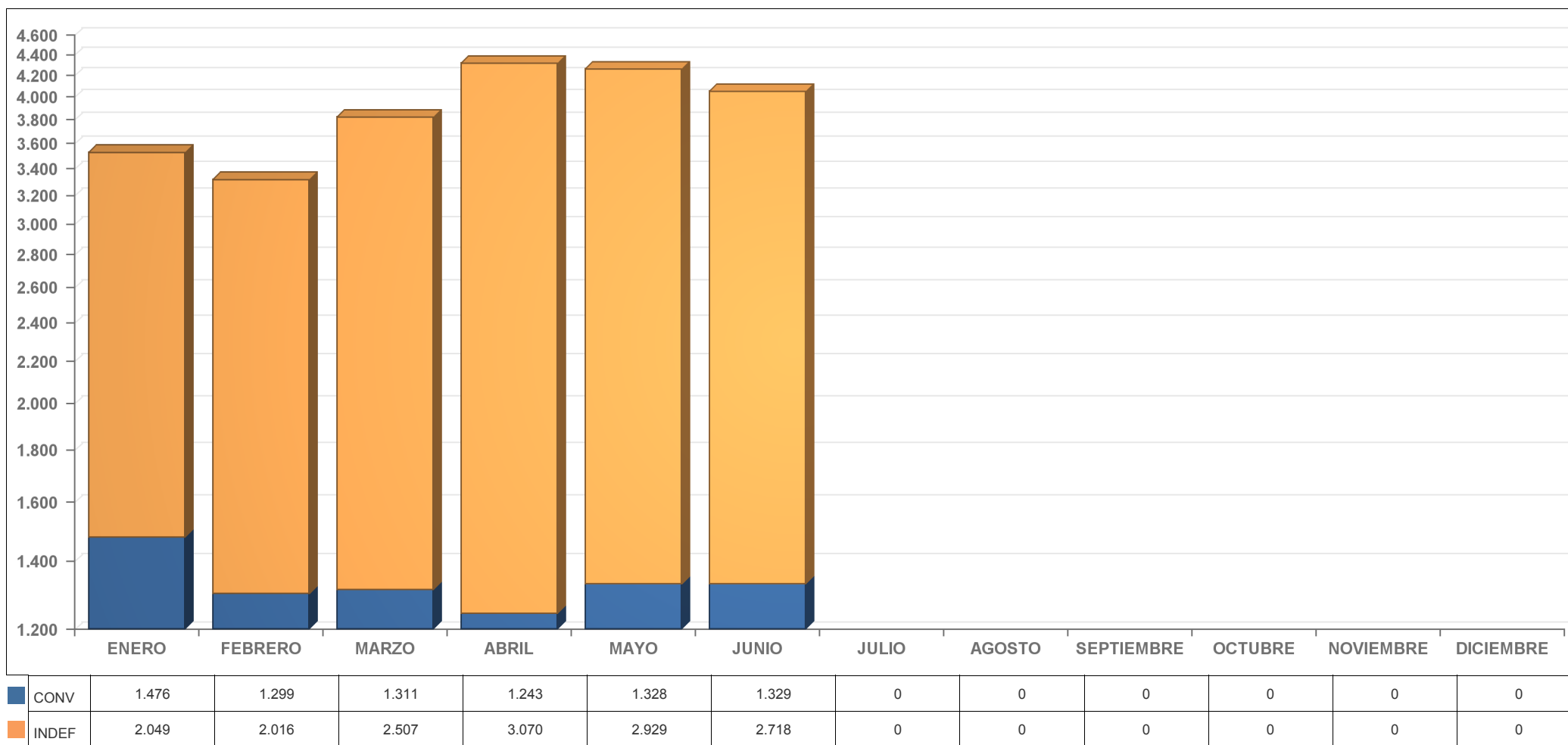
CASTELLÓN



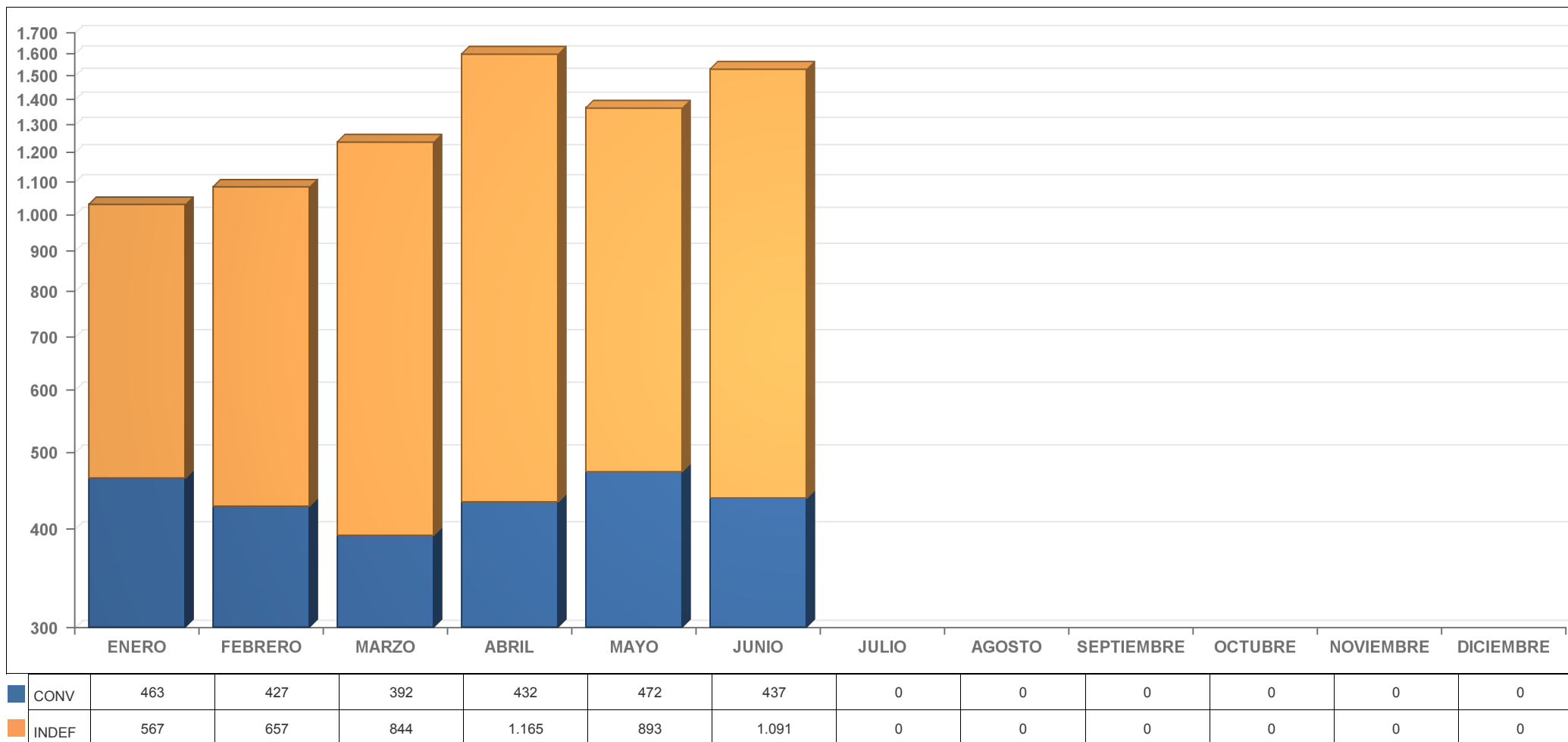
VALENCIA



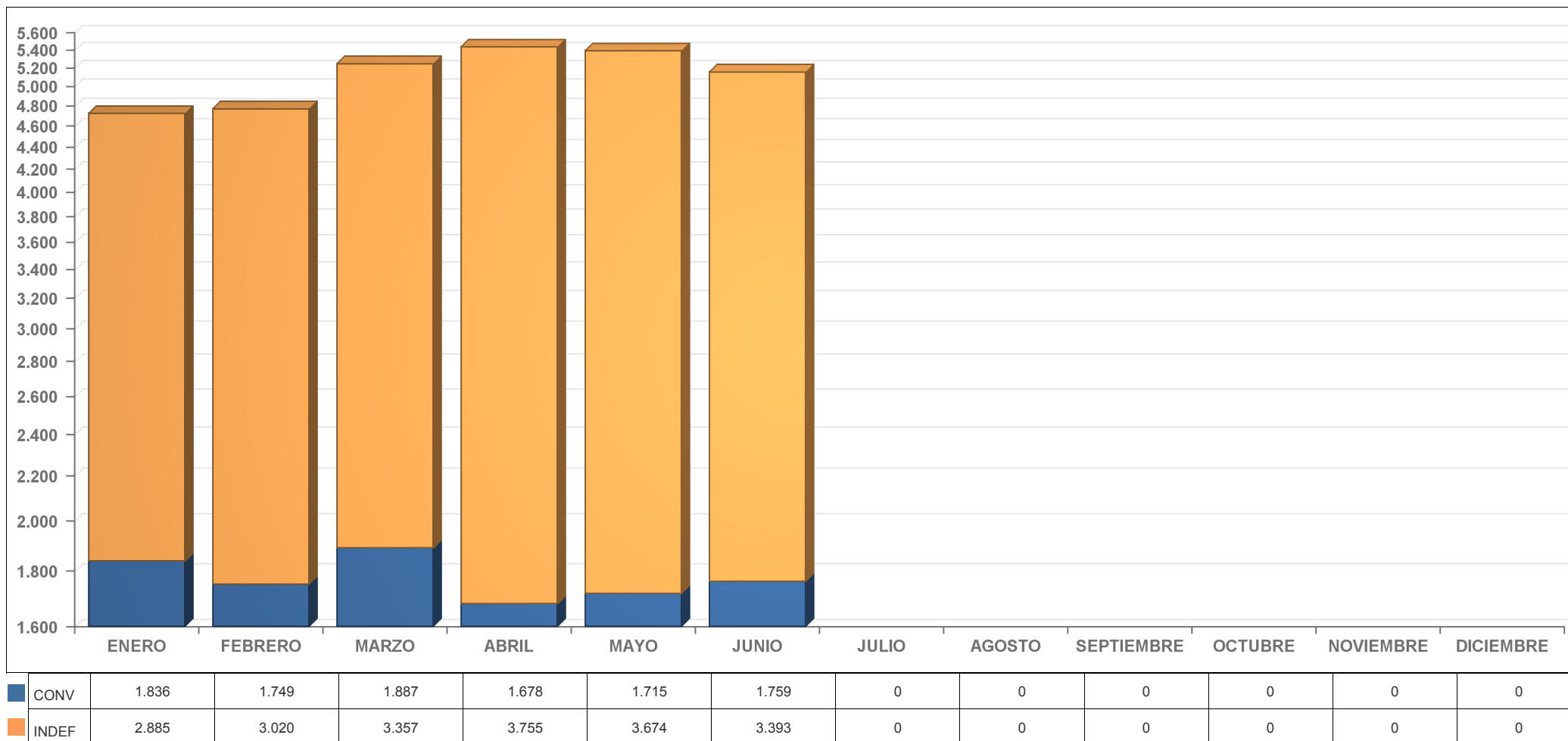
ALICANTE



CASTELLÓN



VALENCIA

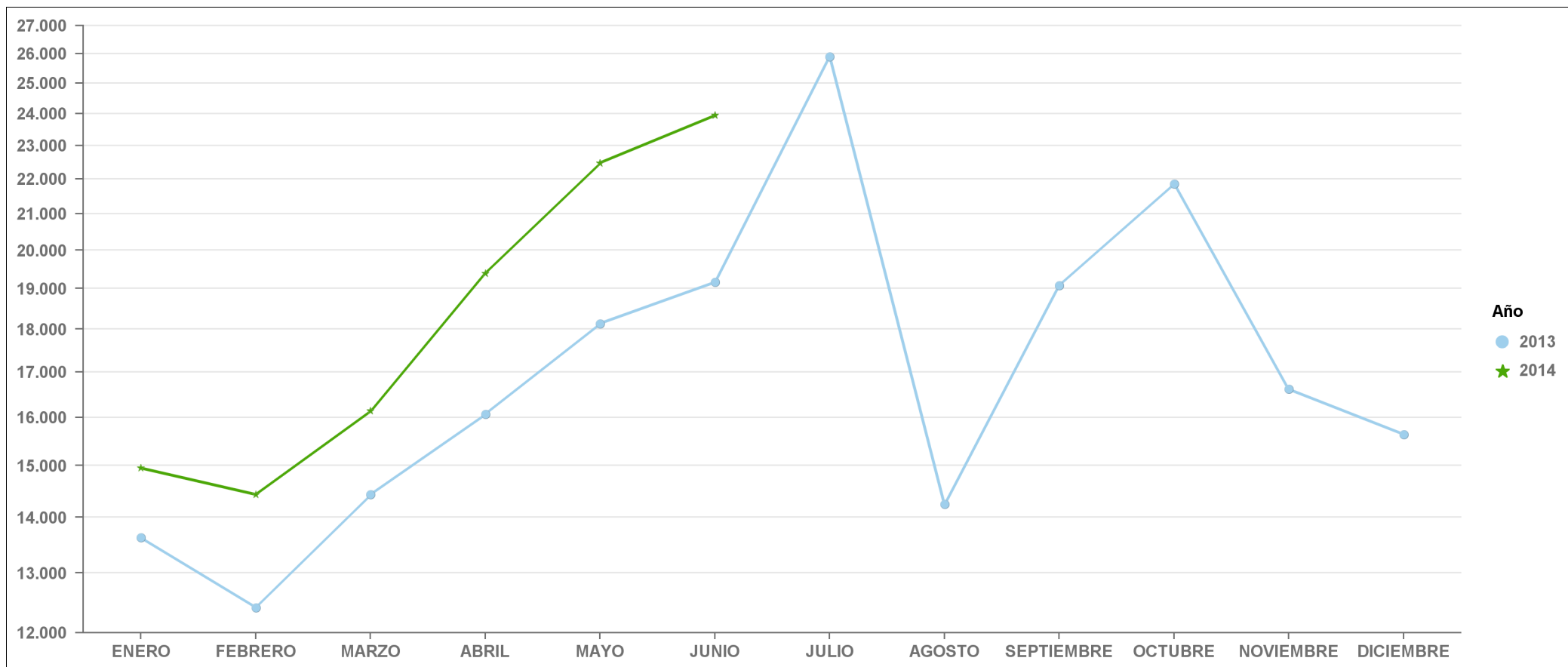


ESTADÍSTICA COMUNIDAD VALENCIANA

SEGUIMIENTO PROVINCIAL DE LA CONTRATACIÓN A TIEMPO PARCIAL

PERÍODO 2013 - 2014

ALICANTE



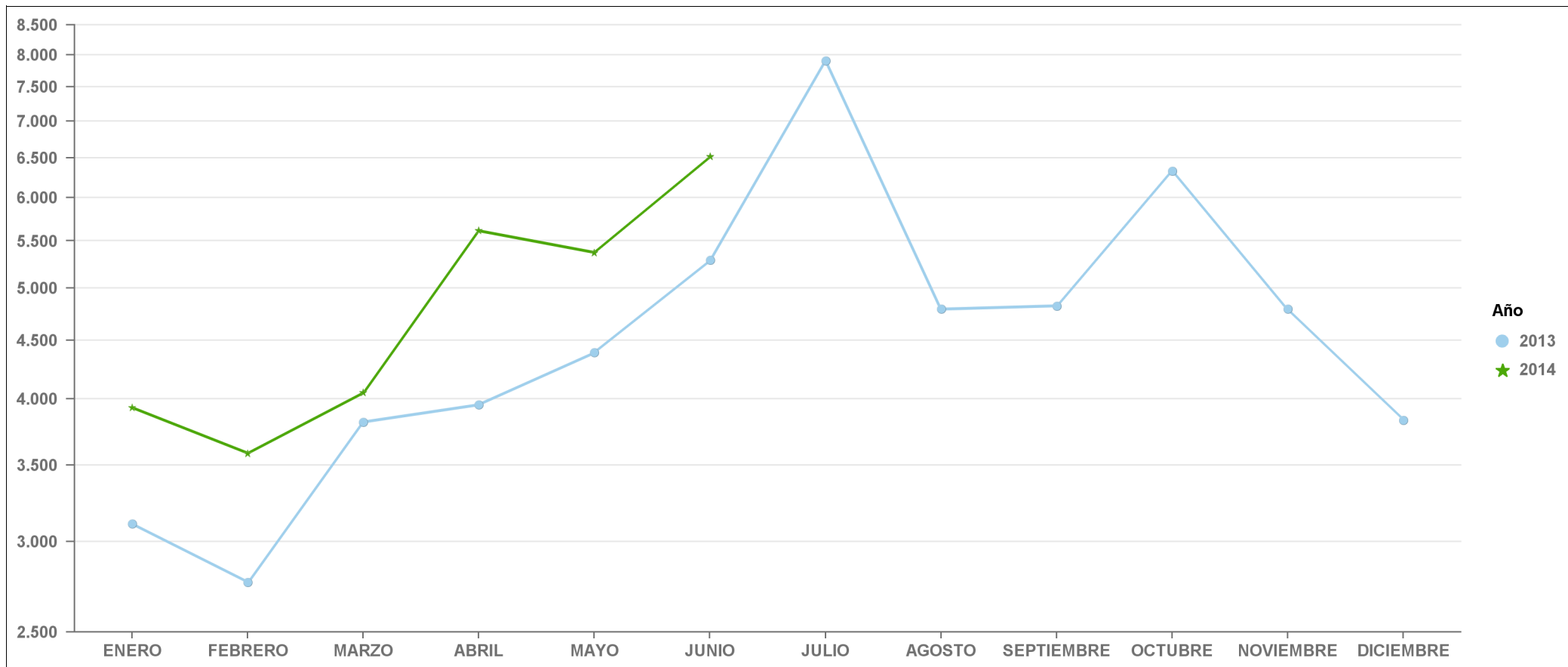
2013	13.624	12.407	14.432	16.068	18.136	19.170	25.900	14.248	19.081	21.859	16.612	15.635
2014	14.953	14.431	16.140	19.390	22.475	23.952	0	0	0	0	0	0

ESTADÍSTICA COMUNIDAD VALENCIANA

SEGUIMIENTO PROVINCIAL DE LA CONTRATACIÓN A TIEMPO PARCIAL

PERÍODO 2013 - 2014

CASTELLÓN



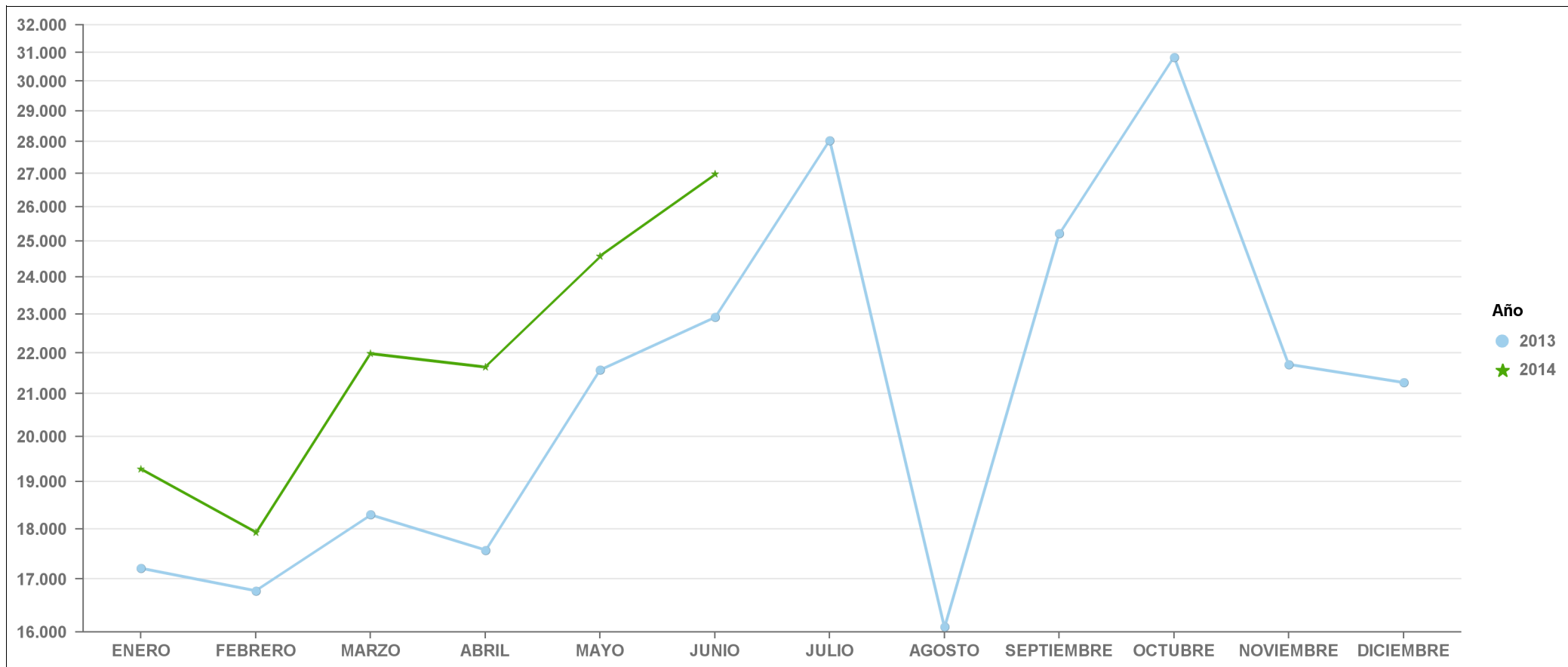
2013	3.109	2.763	3.817	3.953	4.391	5.289	7.903	4.792	4.824	6.332	4.792	3.832
2014	3.930	3.583	4.051	5.612	5.370	6.518	0	0	0	0	0	0

ESTADÍSTICA COMUNIDAD VALENCIANA

SEGUIMIENTO PROVINCIAL DE LA CONTRATACIÓN A TIEMPO PARCIAL

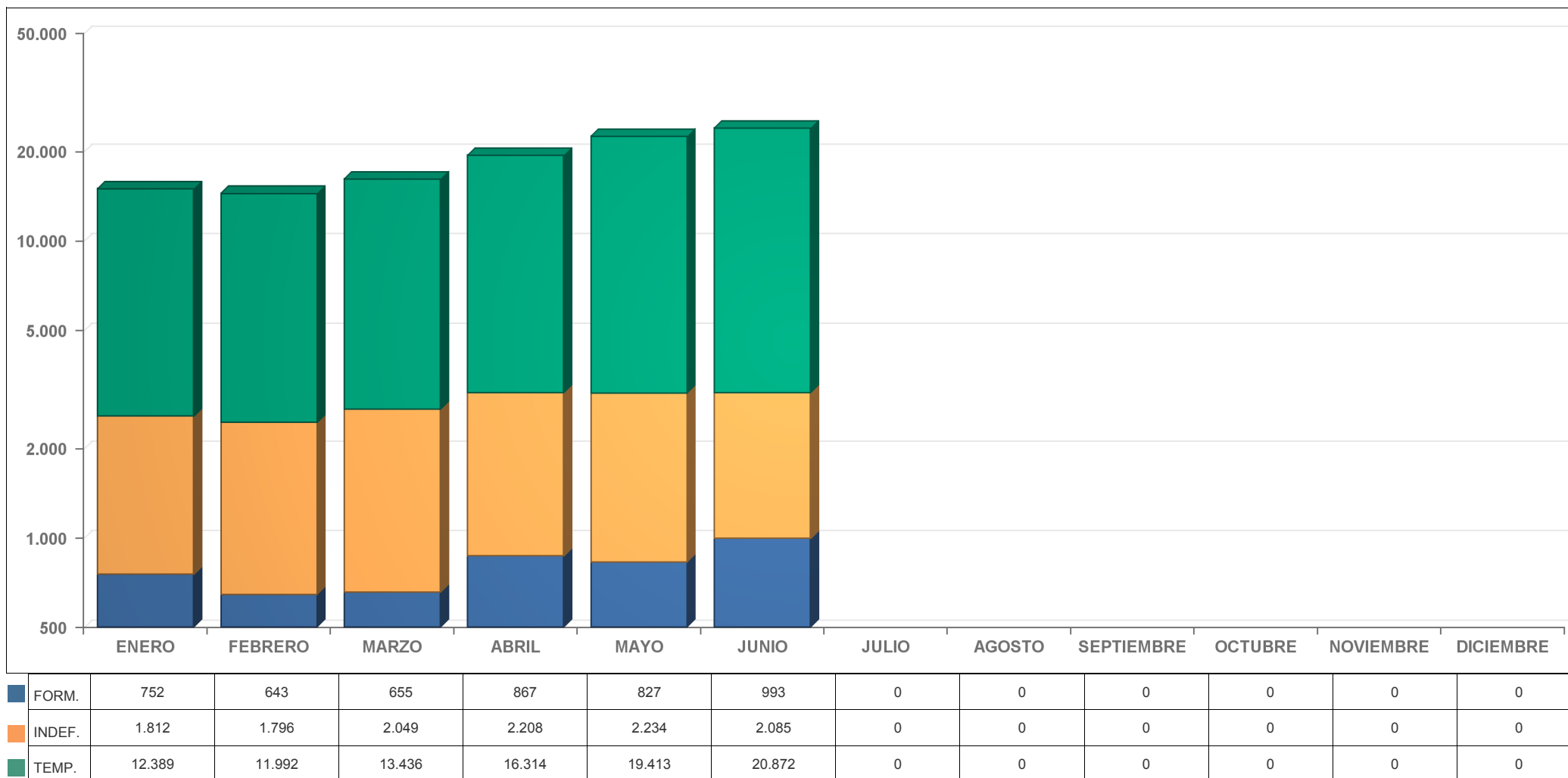
PERÍODO 2013 - 2014

VALENCIA



2013	17.209	16.769	18.293	17.567	21.575	22.921	28.038	16.097	25.222	30.838	21.717	21.268
2014	19.275	17.925	21.985	21.648	24.573	26.983	0	0	0	0	0	0

ALICANTE



CASTELLÓN



VALENCIA

